



The  
University  
Of  
Sheffield.

International  
Leader In  
Teaching &  
Research.

# The Sheffield International Guide 2018.



What's life in Sheffield like? How does the University compare to other British universities? This guide has the answers, and a lot more besides.

If you think Sheffield is right for you, visit our website for more information on the courses you're interested in: [www.sheffield.ac.uk/international](http://www.sheffield.ac.uk/international)

## **A World Top 100 University**

Times Higher Education World University Rankings 2015  
QS World University Rankings 2018

## **Number 1 in the Russell Group for the 4th year running**

Times Higher Education Experience Survey 2017

## **Top 3 for student experience for 7 years in a row**

Times Higher Education Student Experience Survey 2011-17

## **Sheffield – one of the UK's most popular student cities**

## **Number 1 for Accommodation 3 years in a row**

Times Higher Education Student Experience Survey 2014, 2015 & 2016



# Why choose Sheffield?

The University of Sheffield is one of the UK's best universities with a global reputation.



Fith Court

**Ranked 82nd in the world**

2018 QS World University Rankings

**In the top 100 most international universities in the world**

The Times Higher Education 2016

**Founded in 1905, we now have over 27,000 students, including over 7,000 international students from 143 countries**

**In the latest national research assessment, we are in the top 10 per cent of UK universities**

**We are a founder member of the Worldwide Universities Network (WUN), a consortium of 21 research led universities from 14 countries on 5 continents**

**We are a member of the Russell Group of universities, often referred to as the UK's version of the Ivy League**

**Our international partners include Boeing, Rolls-Royce, Siemens, McLaren partnership, and GSK**

**89%**  
Overall teaching satisfaction score

**8th**  
In the Russell Group  
2014 Excellence Framework

**We have six Nobel Prize winners among our former staff and students**

**99%**  
of research internationally recognised or better

**17**  
departments in the UK top ten for research

**Top 10**  
for research output in the Russell Group

**Enterprise Educator of the Year**  
National Enterprise Education 2014

**More than 300 student societies to get involved with in our Students Union**

**No 1 Students Union in the UK for 9 years running**  
Times Higher Education Student Experience 2009-2017



Management School

**170,000 alumni spanning 187 countries**

**Over £4.5 million awarded in scholarships**

**Voted No 1 for accommodation 3 years in a row**  
The Times Higher Education Student Experience Survey 2013-16

**£250**  
million invested in student facilities

# Academic excellence

Sheffield is a leading research university with a global reputation for excellence. The knowledge we generate helps to make the world a better place. Our success is founded on one simple idea: we connect with people.

We believe that true learning means getting out of the classroom and engaging with business, industry, governments and communities. That ethos drives both our research and our teaching.

Our way of doing things attracts the best minds in the world. Our staff advise governments and multinational companies. They write books and create new technologies. Their research influences policy and changes lives.

Sheffield academics are experts in their chosen fields. But they share something else in common: they all care deeply about teaching. And they work very hard at it. Sometimes that means finding new ways to challenge you. Sometimes it's about doing more to support you on your journey.

We support our teachers with the resources they need to develop their skills and put their ideas into practice. Many of them are accredited Senior, Principal and National Teaching Fellows, which means they're recognised at a national level for high quality teaching.

Choose Sheffield and you join a community of students and academics with a strong sense of purpose. Take advantage of everything Sheffield has to offer and you won't just graduate with honours – you'll graduate with insight, skills and experience that set you apart.



**Sheffield  
sets you  
apart**



# Research excellence

The quality of research in UK university departments is assessed in the Research Excellence Framework (REF). The REF is carried out by independent experts for the UK government's higher education funding bodies.

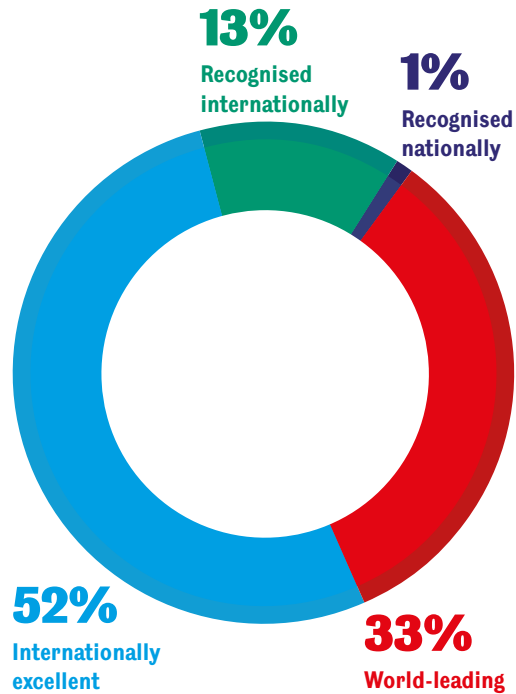
**99%** of research internationally recognised or better.

**Top 10 for research output in the Russell Group**

**17** Sheffield departments are in the UK top-ten for research:

- Allied Health Professions (Biomedical Science, Medicine, Molecular Biology and Biotechnology)
- Animal and Plant Sciences
- Architecture
- Automatic Control and Systems Engineering
- Biomedical Science
- Civil and Structural Engineering
- Computer Science
- Education
- Electronic and Electrical Engineering
- History
- Landscape
- Law
- Mechanical Engineering
- Molecular Biology and Biotechnology
- Music
- Politics
- Town and Regional Planning

## REF Summary

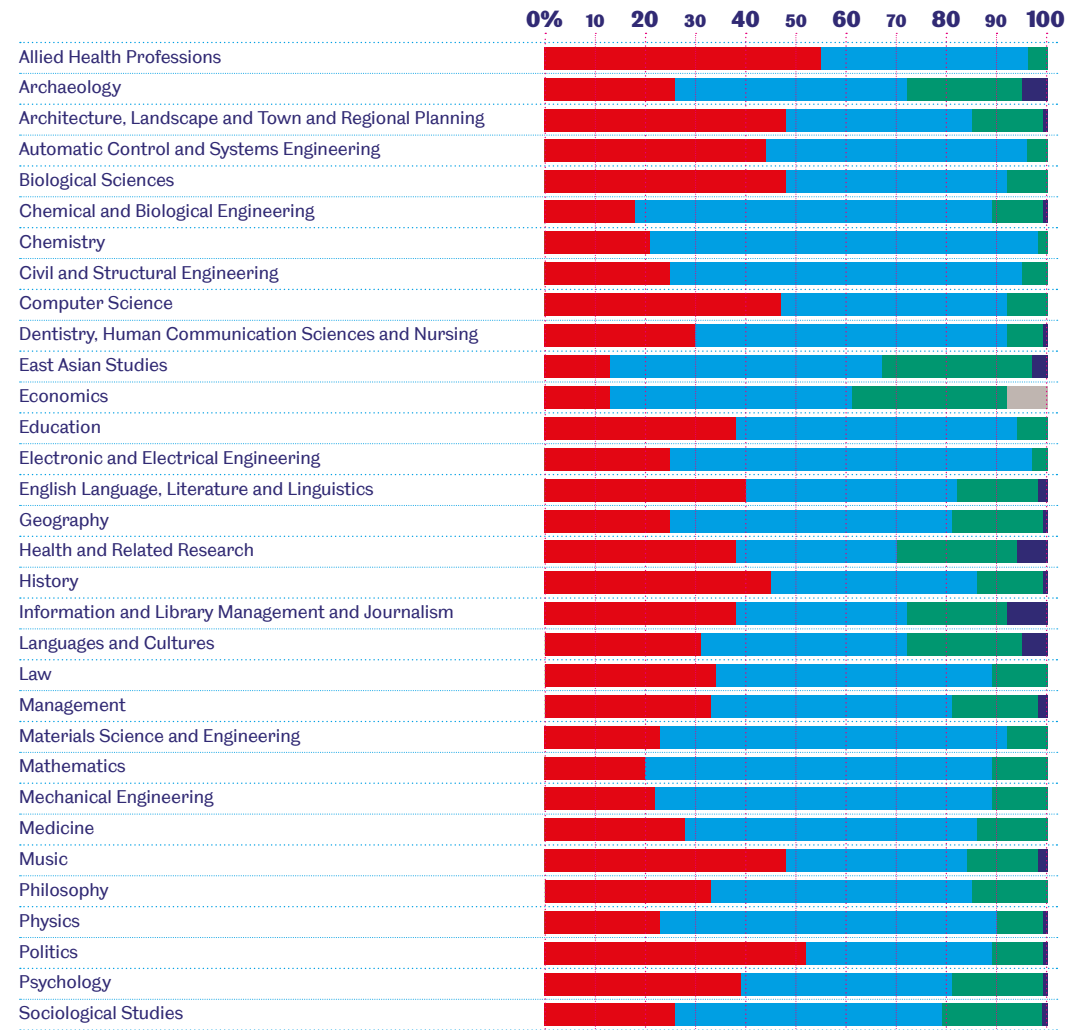


At Sheffield, you become part of a community of outstanding researchers.

The quality of research in UK university departments is assessed in the Research Excellence Framework (REF). The REF is a peer-review exercise carried out by experts from universities, industry and commerce.

In the 2014 REF, the results are presented by subject area. Research activity in each subject area is graded on a scale of 1\* – 4\* as follows:

- 4\* World-leading**
- 3\* Internationally excellent**
- 2\* Recognised internationally**
- 1\* Recognised nationally**



"My supervisor is out of this world. He provides support like I could never imagine and my research cohort is such an adorable bunch of intellectuals. The study facilities and resources in the School of Architecture are quite remarkable, making the department just the right environment for research."

**Teslim Giwa**  
PhD Architecture  
Nigeria



The University of Sheffield Advanced Manufacturing Research Centre (AMRC) [www.amrc.co.uk](http://www.amrc.co.uk)

## Our innovative work with industry and business

Organisations such as Boeing, Rolls-Royce and the Wellcome Trust invest millions of pounds in the University because our staff are world leaders in their fields. Our strong links with companies like these guarantee the relevance of our degree programmes and equip our graduates for careers at the cutting edge of their chosen fields.

### Boeing AMRC

The University of Sheffield Advanced Manufacturing Research Centre (AMRC) with Boeing is a world-class centre for advanced machining and materials research for aerospace and other high-value manufacturing sectors. It's also the base for a new £25 million Nuclear AMRC, which will provide manufacturing expertise for the new generation of civil nuclear energy facilities.

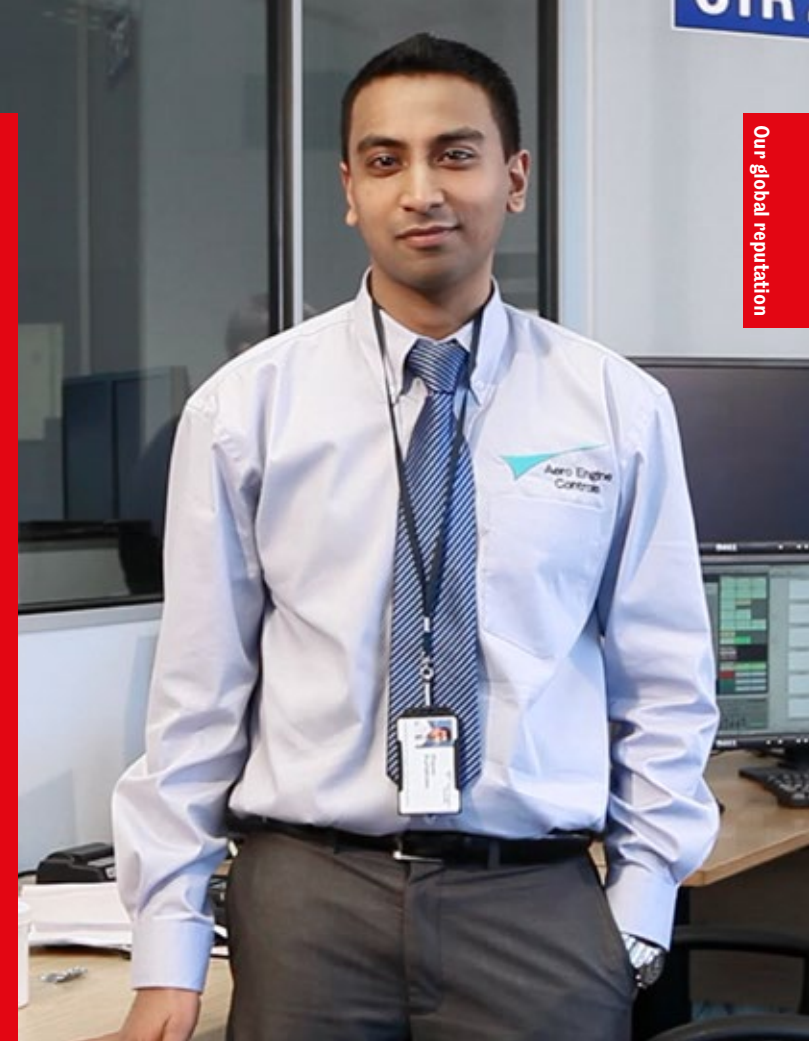
**University of Sheffield's AMRC named Boeing Supplier of the Year 2017**

Researchers and engineers from around the world work with over 60 businesses, from global leaders such as Boeing, Rolls-Royce, Messier Dowty and BAE Systems to local small businesses. The cluster of research centres includes rapid prototyping, composites, engineering design, specialist machining and drilling, robotics, 3D prototyping and knowledge transfer.

**Pravin Kuriakose**  
MSc(Eng) Control Systems

**System Design Team Lead – Airframe Interfaces, Aero Engine Controls India**

“The professors we had were exceptional, they really knew what they were talking about and they were quite approachable as well. My masters was very inspirational because it's very cutting edge. It's not something that's already been implemented - it's something that will be in the future. What ACSE does fits in with what Rolls Royce or Aero Engine Controls want. That's probably why it's quite easy for them to go and pick people from Sheffield, because they've already got the knowledge and the skills. You've got one less step to climb in the ladder essentially.”



Our global reputation

The AMRC helps position the UK as a major player in advanced manufacturing. It is an internationally recognised centre of excellence. It has significant partnership activities in the US, Singapore, South Korea, Australia and is investigating a major collaborative project with Rolls-Royce in Brazil.

### Rolls-Royce

Rolls-Royce plc has established four University Technology Centres (UTCs) at Sheffield, more than at any other UK university. It is also the lead industry partner in the new Nuclear AMRC – a joint initiative between the University, the University of Manchester and a group of business partners.

### Wellcome Trust

We have received £13.6 million from this funding body for state-of-the-art research laboratories for medical researchers. We opened a £1 million gene screening facility in 2010 funded by the Wellcome Trust and our Department of Biomedical Sciences.

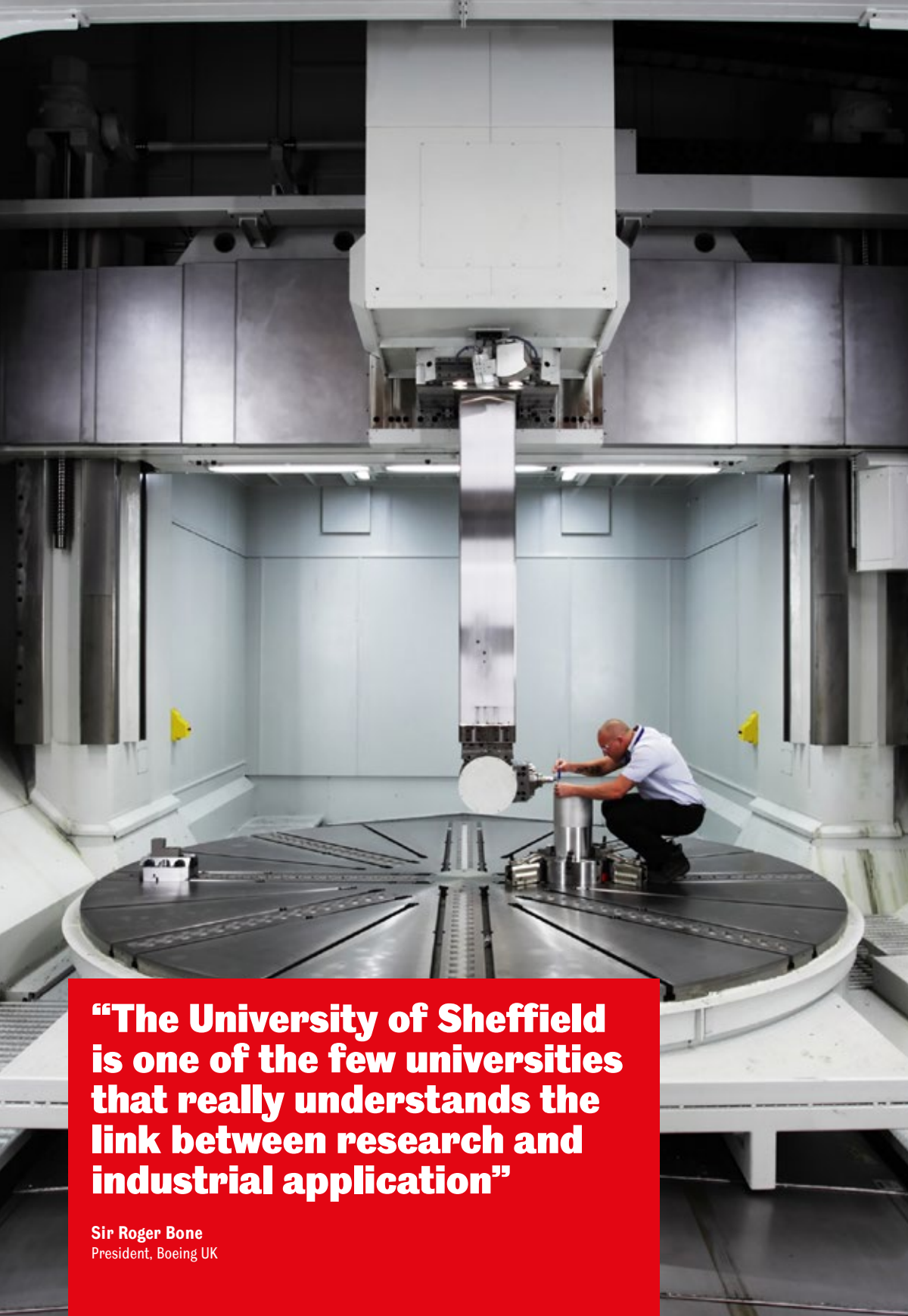
### Creating companies

We also create spin-out companies, exploiting the knowledge generated through our research. We've created more than 40 new companies. Many of these have gone on to form partnerships with industry so that they can carry on developing.

### McLaren

The high-performance supercar manufacturer will open a new purpose-built Composites Technology Centre next to the University of Sheffield's Advanced Manufacturing Research Centre (AMRC). McLaren Automotive and the University of Sheffield will deliver a two-year research and development programme, which will lead to the development of a production facility to build its lightweight carbon fibre chassis for its new models from 2020.





**“The University of Sheffield is one of the few universities that really understands the link between research and industrial application”**

**Sir Roger Bone**  
President, Boeing UK



Our global reputation

“My supervisor is very efficient, constant and hard working. He is always there when I need him to review my work, but also to give me advice in University-related matters. He has been a guide throughout all my adaption process to another academic system, and his style of giving me the independence to formulate and structure my own projects has helped me to improve my research skills. I'm very happy to work with him.”

**Dejanira Araiza Illan**  
Mexico

“Dejanira contacted me about doing a PhD after reading about the robotics work being done in our department. She was particularly interested in doing research on autonomous robotics. We then developed a research proposal upon which she was able to secure funding from the Mexican government.”

**Professor Tony Dodd**  
Automatic Control and Systems Engineering



"The business planning module is in my view a shining example of how to give students an awareness of the way that academic knowledge needs to be combined with practical application and business knowledge. This will help them succeed in the demanding 21st-century marketplace."

**Peter Crawford**  
Taylor & Emmett



**Students of the real world**

We work with business and industry to ensure our students benefit from an education that combines academic excellence with practical skills. The Department of Mechanical Engineering's Technology Strategy and Business Planning module is one example of this approach. The module enables final-year engineering students to

collaborate with partners from business and industry, including manufacturers, marketers and bankers. The students develop solutions to real commercial problems and write accompanying business plans.

Many of their ideas are developed into prototypes and functional products. For example, a walking frame for children with brittle bones was designed by Barry Tan

and Lim Ji Hui, two Malaysian engineering students. This is now being sold across the UK, after being used by Sheffield Children's Hospital. This kind of real-world experience puts our students ahead of the game when it comes to applying for jobs.



"What I really like about my course is the creativity and innovation in engineering as well as the opportunity to use the latest technologies to provide solutions to life's most challenging problems."

**Martin Anih**  
MSc in Electronic Engineering  
Nigeria

# Your future career

**Our graduates are in demand**

Our reputation for excellence means our graduates are in demand. All our degree courses give you transferable skills highly valued by employers. You'll develop interpersonal and communication skills, the ability to work under pressure or as part of a team, good analytical and reasoning skills and presentation skills.

Choosing to study overseas, in a new culture and environment, also shows that you are confident, able to take on new challenges and mix with people from all over the world. Employers look for these qualities.

**Part-time work during your studies**

The UK government allows international students to work for up to 20 hours per week during the academic year and full-time during holiday periods.

**Jobshop**

This is a walk-in service, based in the Students' Union. Our online vacancy service advertises part-time and vacation work, summer placements (internships), voluntary work, insight courses, work experience and graduate jobs. These include part-time work in and around Sheffield at private companies, in the University and Students' Union. Part-time work is not guaranteed.

**The Careers Service**

The Careers Service can help you at every stage throughout your course. It can improve your prospects with employers, whether in the UK, your home country or elsewhere in the world.

- One-to-one advice and information about working as a student.
- Help prepare your CV (résumé), job applications and interviews
- Help with developing skills for the workplace
- On-campus presentations and one-to-one sessions from employers

- Sheffield Recruitment Fairs
- Support from the University of Sheffield Enterprise team
- Specialist careers website and careers adviser for international students

[www.sheffield.ac.uk/careers](http://www.sheffield.ac.uk/careers)  
[www.sheffield.ac.uk/careers/students/inter](http://www.sheffield.ac.uk/careers/students/inter)  
[www.sheffield.ac.uk/employability](http://www.sheffield.ac.uk/employability)

**Sheffield graduates are 7th highest paid in the UK**

Emolument Alumni 2015





# #WeAreInternational

**We value international students. We want to make sure that their contribution to our economy and culture is recognised. We launched the 'We are international' campaign to support talented international students as they apply to study in the UK.**

**Over 27,000 students, from 143 countries.**

Each and every one of our students is different.

Ethnically diverse, culturally diverse, diversity of nationality, gender, faith, interest, subject, support need – there is no one typical Sheffield student and we don't look for one.

We celebrate and benefit from the breadth and diversity of our student population and all that brings with it, enriching the student experience for all through the myriad of relationships and connections made during your time at University.

**More than 70 different UK and international qualifications are accepted for entry to Sheffield**



**In the top 100 most international universities in the world**  
The Times Higher Education 2016



"It is not a coincidence that Sheffield University is one of the best in the Russell Group and that Sheffield Students' Union is the best in the country. We value global citizenship and cultural enrichment. We are owned by our students and we strive to offer them the best student experience. Here, together, we respect our differences and cherish our similarities because we all contribute to what makes Sheffield a global city. This openness to diversity, to bringing the world into Sheffield, to expanding our international community make us the best choice for students from all around the world. Despite anything that might happen in the political arena, we are not afraid to say that We Are International."

**Ana Popa**  
International Students Office 2016/17

**One of the UK's largest volunteering programmes**  
**170,000 alumni spanning 187 countries**



**26% of our students are from overseas**  
**120 languages spoken within Sheffield**  
**Over 25 faiths and beliefs represented**



# Stand out from the crowd

We aim to help you to develop and take your place in the world, working with the brightest and best from across the globe.

### Sheffield sets you apart

Take advantage of the opportunities Sheffield offers and you won't just graduate with honours – you'll graduate with extraordinary insight, ambition, confidence, skills and experience.

### A richer education

We encourage you to think outside of your subject area. That could mean learning a language or anything else you feel will enhance your knowledge.

Sheffield's award-winning volunteering programme is

one of the biggest and best in the UK. There are hundreds of opportunities to work with the community. We can also help you develop your own volunteering projects.

Our Sheffield Graduate Award recognises your individual extra-curricular achievements and demonstrates your commitment to personal development. You can achieve the Award when you graduate by taking part in activities such as volunteering, work experience and international activities during your course.

### A powerful blend of teaching and research

Applied research is an integral part of the curriculum. You'll work alongside brilliant researchers on live projects as part of your course. This could mean solving a business problem set by one of our partners, addressing a social issue or working with a community anywhere in the world.

### Preparation for life and the world of work

We work hard to make sure you get as much work experience as possible, whether that's short



Engineering students from Nigeria, Botswana and Malaysia win BP's UK Ultimate Field Trip competition



University of Sheffield students win the 2014 Enactus UK National Competition

term placements, a full year in industry, an internship or all three. We have links with many global companies including IBM, Microsoft, Rolls-Royce, Fujitsu, Boeing, Siemens and Ernst & Young. Our relationships with employers help you to gain work experience from the start of your degree and connect you to more opportunities when you've graduated.

You can develop your personal and professional skills, by spending time abroad. Many courses offer you the chance to study part of your degree in Europe on the Erasmus programme or at a university in Australia, Canada or the USA on the Study Abroad programme. You could go on a field trip or a summer school overseas or get involved in an international volunteering activity.

### Making ideas happen

If you have a passion for business the International Entrepreneurs programme will develop your entrepreneurial and leadership skills. Consisting of a series of workshops, delivered by a range of experts, you will explore the 'entrepreneurs' journey' from initial idea development right through to developing a 'minimum viable product (MVP).

We run two consecutive programmes:

Aspiring Entrepreneurs is for students who are looking to develop entrepreneurial skills, discover innovation techniques and get a feel for what it is like to be an international entrepreneur. You will pitch ideas, form teams, present to an expert panel of judges and win prizes!

## Enterprise Educator of the Year

National Enterprise Education 2014

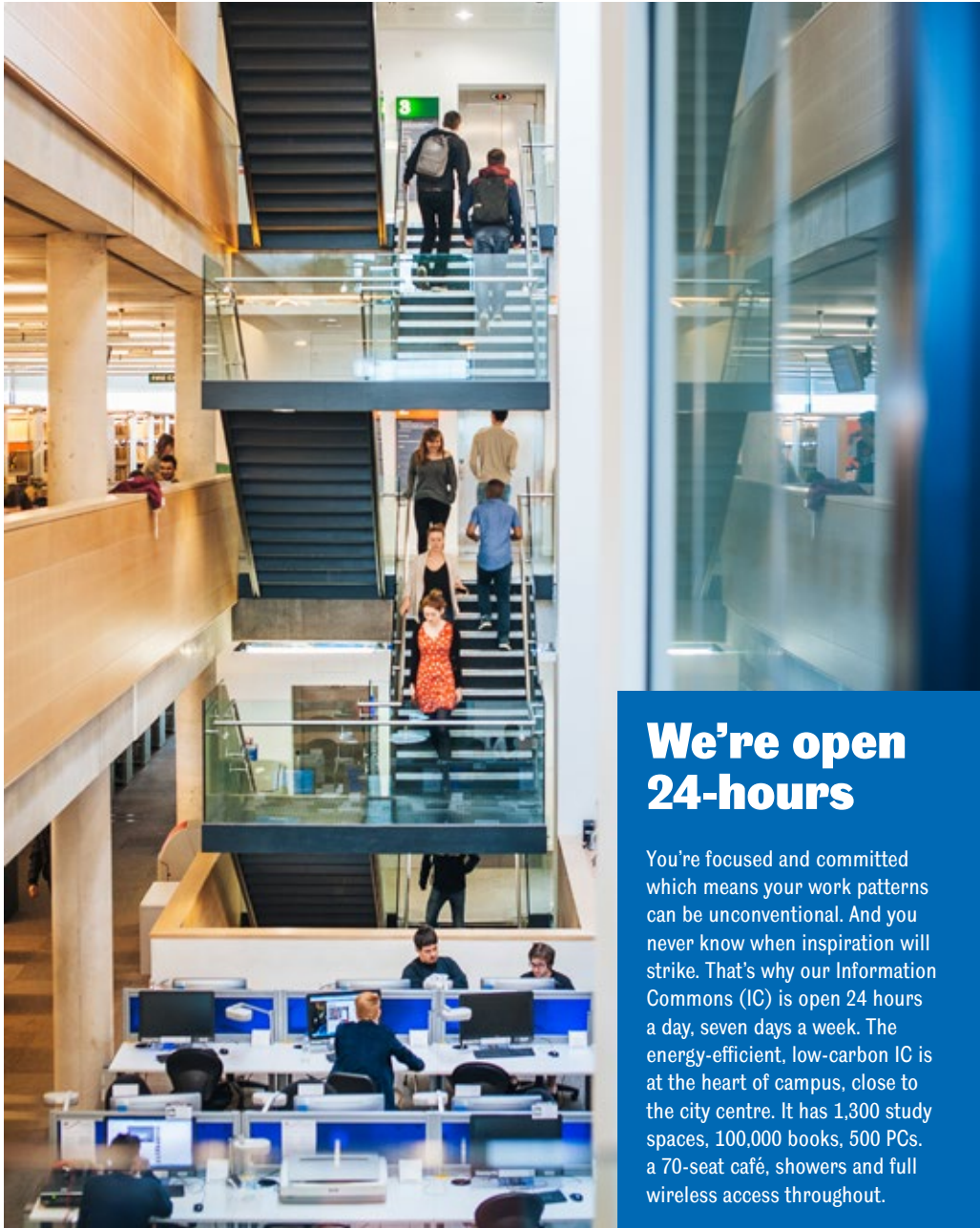
Graduate Entrepreneurs is for students who are in the final year of their studies and are considering setting up a business in the UK after graduation. This programme will not only give you the skills to validate your business idea, but will also assist you in applying for the Tier 1 Entrepreneurs Visa.

[www.enterprise.shef.ac.uk/international-entrepreneurs](http://www.enterprise.shef.ac.uk/international-entrepreneurs)

Our students were crowned UK Champions at the Enactus UK National Competition in 2014. They went on to represent Sheffield at the 2014 Enactus World Cup in Beijing, competing against 35 other countries.



# Our campus



## We're open 24-hours

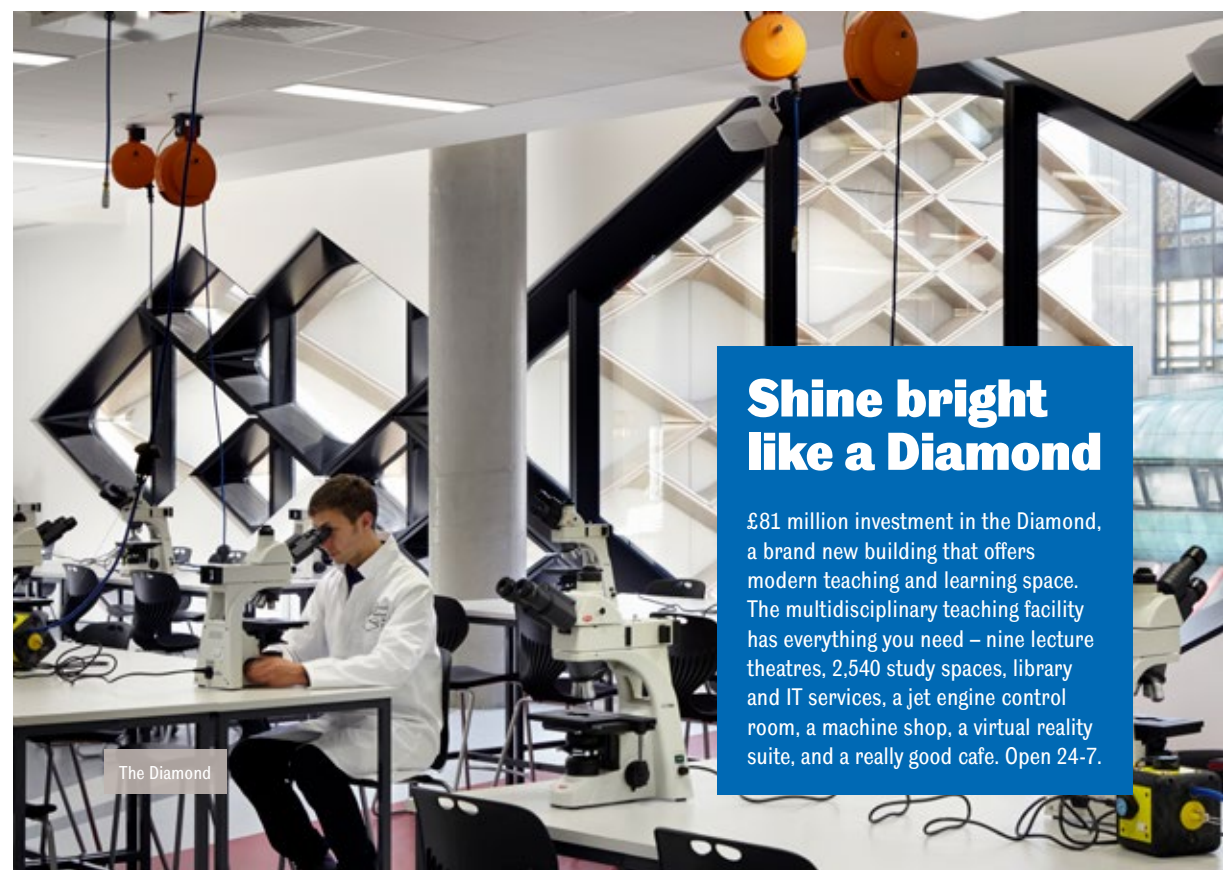
You're focused and committed which means your work patterns can be unconventional. And you never know when inspiration will strike. That's why our Information Commons (IC) is open 24 hours a day, seven days a week. The energy-efficient, low-carbon IC is at the heart of campus, close to the city centre. It has 1,300 study spaces, 100,000 books, 500 PCs, a 70-seat café, showers and full wireless access throughout.



## £250m invested in student facilities

That means world-class equipment, resources and study space.

Experience Sheffield



## Shine bright like a Diamond

£81 million investment in the Diamond, a brand new building that offers modern teaching and learning space. The multidisciplinary teaching facility has everything you need – nine lecture theatres, 2,540 study spaces, library and IT services, a jet engine control room, a machine shop, a virtual reality suite, and a really good cafe. Open 24-7.

The Diamond



# Our city

Sheffield is England's fourth largest city. It's home to over half a million people, including over 50,000 students. Sheffield is one of the UK's most popular places for students to go to university. It is located in the middle of England. London is just over two hours away by train. And we are close to the Peak District countryside.

People from all over the world have made Sheffield their home. It's a rich, diverse, multicultural city. You'll find that people in Sheffield go out of their way to help you and welcome you. We're proud of our city's unique character. After studying here for a while, our students are proud to be a part of it too.

We love the fact that although Sheffield is developing all the time, it has kept its sense of community. This is a friendly, safe and affordable place to make your home. Here you can enjoy sophisticated fast-paced city life and be in the middle of beautiful countryside in 20 minutes.



Peace Gardens

**More than 120 languages spoken in Sheffield**

**4th largest city in England**

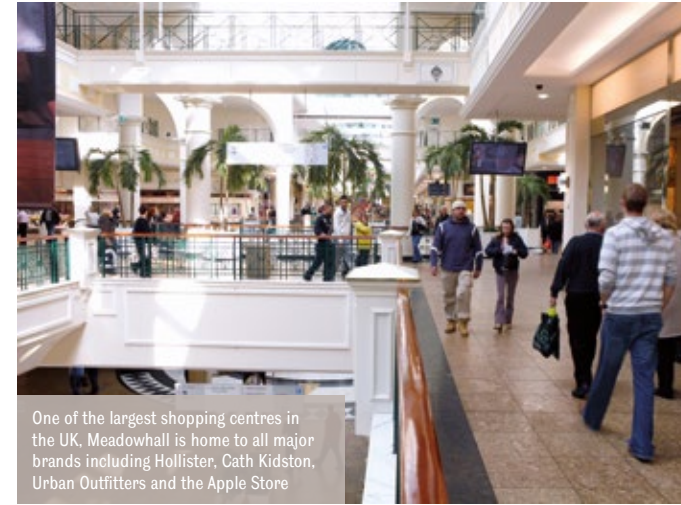
**Living costs are 10% lower than the UK national average and 25% lower than London**

**Sheffield is one of the safest big cities in England. Less crime than Manchester, Leeds, Birmingham and Bristol**

**62% of Sheffield is green space**

**Voted the happiest and most generous city in the UK**

**More than a third of the city is inside the Peak District National Park, a world-famous area of outstanding natural beauty**



One of the largest shopping centres in the UK, Meadowhall is home to all major brands including Hollister, Cath Kidston, Urban Outfitters and the Apple Store

"I really feel attached to the local community here and to other international students, especially those coming from the Middle East and sharing more or less the same concerns. Sheffield is a very nice and cosy city and once you have the right company, it just becomes perfect."

**Diana Al Jahromi**  
PhD Applied Linguistics  
Bahrain



Peace Gardens



Shopping on Fargate



**Crowned as Emerging City Destination of the Year**

The Luxury Travel Guide, 2017

**Sheffield is safer than other big cities**

The UK Peace Index 2013

**Europe's Leading Destination 2014**

World Travel Awards

**No. 22 on The New York Times '52 Places to Go in 2014'**

**3rd in the world's top 10**

Lonely Planet's 2014 Best in Travel



Weston Park



The Botanical Gardens



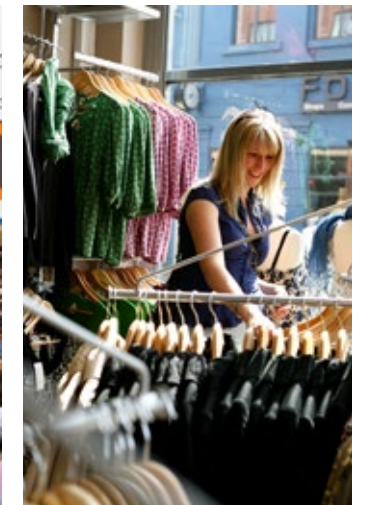
City Hall



Sheffield street food



Tramlines Festival



The Peaks



# Student life

## Music

Sheffield's music scene is one of the most exciting in Britain. The large stadiums attract many of the biggest stars in the world. The University itself is a key venue for bands and DJs. Our Students' Union and the city's music bars and clubs have live music every night of the week. There are regular classical music performances by orchestras and groups on campus and in the city.

## Theatre

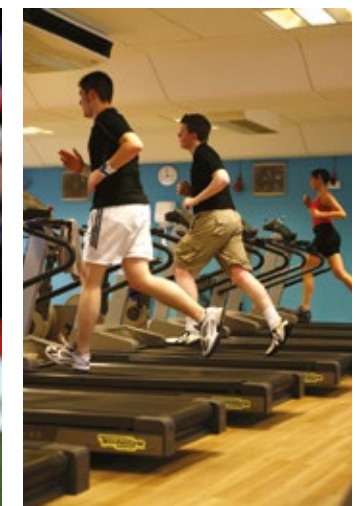
Sheffield is home to one of the most important theatre complexes outside London. The Crucible, Lyceum and Studio theatres have won awards for their groundbreaking productions which include drama, dance, comedy and music. Student discounts are available.

"You'll never be bored here in Sheffield! If you are hungry for Asian food, it's just a few minutes walk from the University to the town centre – you can find Chinese dim sum, hot pot, Korean BBQ and Japanese sushi."

**Cheuk Heng (Cherry) Yuen**  
MPlan Urban Studies and Planning  
Hong Kong



The Crucible and Lyceum





### Art

The award-winning Millennium Gallery complex is linked to the Tate and the V&A in London. Other attractions include the Graves Art Gallery and the Site Gallery for contemporary art.

### Cinema

The Showroom is the biggest independent cinema outside London. Serious film fans love the programme of modern, classic and world cinema. Student discounts are available. You can see all the latest Hollywood blockbusters at the city's multi-screen cinema complexes.

### Eating out

There's something for every taste, from award-winning restaurants to cafes ideal for a student budget. Within minutes of the campus you will find food from around the world: Chinese, Indian, Italian, Thai, Spanish, Japanese, Mexican, Lebanese. Vegetarian and halal food is widely available.

### Shopping

Whatever your budget, Sheffield has everything for the keen shopper – from malls to markets, chain store favourites to designer labels. The city centre has

well-known high street stores and the Devonshire Quarter's great mix of independent shops and cafe bars. Meadowhall, one of Europe's largest shopping malls, is a ten-minute tram ride from the city centre.

### Transport

Frequent buses and trams make it easy to get around the city. There are good links to all major cities and airports. You can get a direct train from Manchester International Airport and be in Sheffield in under an hour. There are student discounts available on buses and trains.

### Sport

Sheffield is the UK's first national city of sport. Facilities include an Olympic-sized swimming pool, golf courses, tennis and squash courts and an ice rink.

There's plenty to watch: we have two football teams – Sheffield United and Sheffield Wednesday. Our rugby, ice hockey and basketball teams compete at international level. The city also hosts the World Snooker Championships every year. If you like climbing, cycling or walking in the countryside, we're

ten minutes' drive away from the Peak District National Park.

### University sport

The University has invested £5.5m in redeveloping its sports facilities. We have a high-tech gym, a 33-metre swimming pool, 45 acres of outdoor pitches, tennis, squash and badminton courts, and one of the biggest bouldering walls in the country. The facilities are popular with our international students, who do well in our sporting leagues.

All our sports facilities have disabled access routes and wheelchair-friendly doors. [www.sport-sheffield.com](http://www.sport-sheffield.com)

### Faith

The University has a number of chaplains representing major world faiths. Our multi-faith chaplaincy team offers guidance and support and organises worship and activities throughout the year.

There are Muslim prayer rooms in three locations on campus and an Islamic Centre close to campus. [www.sheffield.ac.uk/ssid/chaplaincy](http://www.sheffield.ac.uk/ssid/chaplaincy)

## Students' Union

In UK universities the Students' Union is the centre of student life. This is where you'll find support services, shops, advice centres and entertainment.

Our Students' Union is consistently rated one of the best in the UK. Run by students for students, it gives everyone the chance to contribute. A team of elected officers take care of your interests and make sure your voice is heard.

When you become a Sheffield student you automatically become a member of our Students' Union. For many of our international students, this is what makes their experience so memorable.

Located in the heart of the campus, the Students' Union has shops, cafes and bars which are open seven days a week, from breakfast into the night. There are club nights every night of the week

attracting big name DJs and bands from around the world. There is a bank and even a cinema.

There are over 250 clubs and societies based in the Students' Union. Many events are specifically organised by and for our international students.



Holi celebrations at Endcliffe



## No 1 in the UK

Times Higher Education Student Experience 2009–2017



### Give It A Go

An award-winning scheme run by the Students' Union and open to everyone. You get the chance to try out as many activities, sports and courses as you like. You don't need any experience to take part and it's a great way of meeting people.

### World Week

This is an annual celebration of our on-campus diversity. Our students share their different cultures and regions through a variety of art, theatre, film, music and dance. The International Cultural Evening is the highlight. Our students from around the world put on music and dance performances.

### World Food Festival

National societies prepare traditional dishes from their home countries. Experience a melting pot of world cuisine right here in Sheffield.

### International societies

Our Students' Union is home to many international societies which celebrate national cultures and traditions from around the globe. National holidays and festivals are also celebrated throughout the year.

### International Students' Officer

Sheffield has a strong tradition of representing the views of international students. Each year, students elect an international student as their International Students' Officer, which is a full-time position on our Students' Union Committee.

### Global Campus

Our Global Campus runs events throughout the year, such as the One World Cafe, to help you experience UK life and meet lots of people.

[www.sheffield.ac.uk/ssid/globalcampus](http://www.sheffield.ac.uk/ssid/globalcampus)

"The Student Union is a great place with everything you might ever need all in one great building. I realized that if I have only one year to spend in the UK and want to grab all the opportunities from student life and feel part of an international student community, then Sheffield is the place to be!"

**Ardak Kamizinova**  
MA Translation Studies  
Kazakhstan

# Support for you

### We support you every step of the way

We'll help you with your application and send you lots of useful pre-arrival information. We can help with immigration and visa issues, meet you at the airport and make sure you settle in.

### Meet and Greet scheme

If you're flying to Manchester International Airport, we can meet you and take you to the University. This service is available in September, just before the start of the academic year. [www.sheffield.ac.uk/ssid/international/before/meet-greet](http://www.sheffield.ac.uk/ssid/international/before/meet-greet)

### Arrival and orientation

We run an extensive programme of events and activities in September the week before UK students arrive. It's a great opportunity to make new friends, meet staff and find your way around the University and the city. [www.sheffield.ac.uk/ssid/newstudents/orientation-week](http://www.sheffield.ac.uk/ssid/newstudents/orientation-week)

### International Student Support Services

Our International Student Support Services can help with a range of student-related matters during your studies or before you come to Sheffield. The team includes four trained immigration advisers. They can give information and answer questions about academic, financial, immigration, personal and social issues. They can also help you settle into life in Sheffield and make the most of your experience in the UK. [www.sheffield.ac.uk/ssid/international](http://www.sheffield.ac.uk/ssid/international)

### Student Services Information Desk (SSiD)

You can use this one-stop shop for information and advice about a whole range of University services before and after you arrive. Friendly, knowledgeable staff can answer most questions and guide you to specialists where necessary.

### The Student Advice Centre

The Students' Union Student Advice Centre gives a free, confidential and professional advice service to all students at Sheffield. The centre provides advice and information on employment, money and housing, as well as academic and welfare matters. There is an International Students' Adviser to help with immigration matters for the families of international students in Sheffield. You can also get advice on your studies and working in the UK after your studies. [www.sheffield.ac.uk/union/advice](http://www.sheffield.ac.uk/union/advice)

### Healthcare

You must register with a doctor when you arrive in the UK. The University's Health Service runs an award-winning Health Centre for students on campus. Our team of doctors and nurses offer a full range of general medical services, without charge. [www.sheffield.ac.uk/health](http://www.sheffield.ac.uk/health)

### Personal tutor

All students have a personal tutor within their academic department. You can talk to your personal tutor about any questions or concerns. You will normally have at least two meetings per semester with your tutor.

You can also see your tutor when you need. If they cannot help, your tutor can direct you to our specialised support services.

### Students with disabilities

The University welcomes disabled students. We are committed to responding appropriately and effectively to their additional support requirements. Disability and Dyslexia Support Service is a friendly and confidential service. It provides support and advice to help students access their studies and university services. [www.sheffield.ac.uk/ssid/disability](http://www.sheffield.ac.uk/ssid/disability)

### Women's Night Bus

The Women's Minibus runs every night during term-time and will take you from outside the Students' Union building, or Information Commons, directly to your accommodation.

## No 1

**in the Russell Group for:  
Student services  
Support overall  
Financial support  
Work experience  
Careers advice  
Employability  
Learning spaces  
Virtual learning  
Student Barometer 2015**

**Our 'one-stop shop' for student-related enquiries, guidance and support, has been consistently ranked 1st within the Russell Group for the last five years.  
Student Barometer 2015**



# Living in Sheffield



**Voted No 1 for  
Accommodation  
3 years in a row**

The Times Higher Education Student  
Experience Survey 2013–16

**85% of our  
University  
accommodation  
is in the city's  
most sought  
after areas**

**82% of rooms  
are en-suite**

Your own study bedroom

University accommodation is a great way to start your life as a student in the UK. It's an affordable choice and good value for money. You can arrange everything before you leave for the UK, so you'll be guaranteed somewhere to live and be able to move in straight away.

Living in University accommodation is a great way to settle into your life as a student at the University of Sheffield and whether you are a Home, International, Undergraduate or Postgraduate student, as long as you meet a few conditions you are guaranteed accommodation.

See guarantee page:  
[www.sheffield.ac.uk/  
accommodation/guarantee](http://www.sheffield.ac.uk/accommodation/guarantee)

We organise events and activities to help you settle in and make new friends from the UK and other countries. Our Residence Life team will look after your welfare and support you in any possible way. You will feel safe and secure with 24-hour security.

Standard contracts are for 42 and 51 weeks but you can stay as long as you like - just speak to our accommodation team.

Wherever you live, you will get a bedroom to yourself. The majority of rooms are en-suite, which means you'll have your own bathroom and WC. There are also some rooms with shared bathroom facilities, which are ideal for students on a budget.

In our apartments, houses and flats, you will share the kitchen and living areas with other students. We also have studios which are fully self-contained. These are perfect if you prefer more space to yourself and don't want to share.

## Guaranteed accommodation



Kitchen and living space in Endcliffe/Ranmoor

We also have accommodation for students with families and for students with additional support requirements.

We have University accommodation located at Ranmoor/Endcliffe and City, which are specifically designed for our students. The majority of first year students choose to live with us as it is easier to make new friends whilst feeling safe in a new city.

### Endcliffe

A range of self-catered accommodation close to the popular student areas of Broomhill and Ecclesall Road. There's a mix of more traditional converted houses and Victorian mansions alongside modern apartments and flats. At the heart of the complex is The Edge, a modern building with a dining room, bar, cafe, support facilities and 24-hour IT space and launderette.

### Ranmoor

Ranmoor is popular with international students. All accommodation is self-catered. It has ensuite rooms, as well as modern studios and family apartments. At the heart of the complex is The Ridge, where there's social spaces and a launderette.

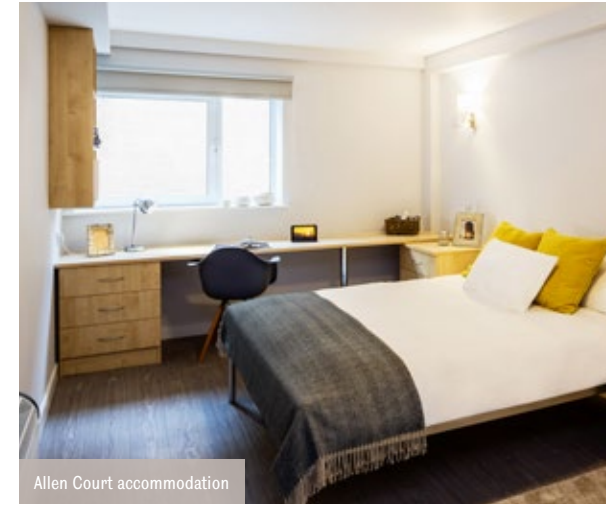
### City

All city based accommodation is self-catered. The accommodation is located in the area between the city centre and University campus, so you can walk to either in only a few minutes. The centre is compact and easy to walk around, with good pedestrian areas and plenty of public spaces. Our accommodation and the local residential suburbs are nearby and well served by frequent public transport.



The best thing about Allen Court is its great location. It is very near to the city centre and university facilities such as the Information Commons which opens 24/7 and the Students' Union. Sheffield is one of the safest cities in the UK so I do feel safe living here. We also have staff at the reception desk 24/7, so you can get help at any time. Living in student accommodation during your first year of study will ensure that you won't need to worry about paying bills or living with non-students. There are also residence mentors, ready to offer help and advice. I made friends with my flatmates within the first week. I especially enjoy the times when we share our national food with each other!

**Suk May Low**  
PhD Applied Linguistics  
Malaysia



"I live in Crookes which is close to the University, has good bus lines, and different local shops and supermarkets. The local people are very friendly. Sometimes I stay late at the library and I feel completely safe walking back to my house. My daughter's nursery is just 10 minutes' walk, and the school she starts in September is only 100 steps away. Out of the city centre, most houses offer good space, as well as small gardens."

**Sara Fayyad**  
PhD in Journalism  
Jordan



**Take your own 360 degree virtual tour of our accommodation:**

[www.360degreevirtualtours.group.shef.ac.uk](http://www.360degreevirtualtours.group.shef.ac.uk)

Endcliffe



City centre living





## Included in your rent:

- Electricity, gas and water bills
- Free WiFi
- Room contents insurance

Lunchtime at The Edge

### How much does it cost?

Rents vary depending on the location, the type of room and the facilities.

Self-catered accommodation rents for 2017–18 range from £4,292.40–£6,262.20 for 42 weeks. This includes all your utility bills (electricity, gas and water), room insurance and internet.

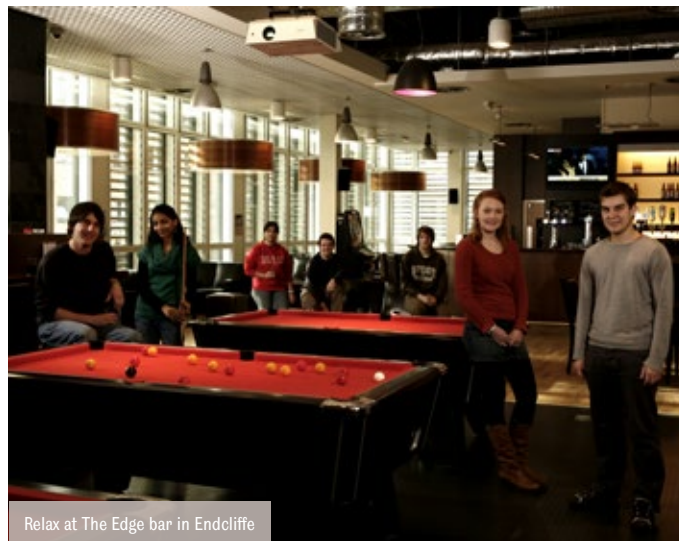
### Self-catered accommodation

In self-catered accommodation you have more flexibility to buy and cook your own food. All of the accommodation in the City area is self-catered. You can choose self-catered accommodation in Ranmoor/Endcliffe too.

You can also buy a meal payment card if you are in self-catered accommodation.

If you don't feel like cooking, you can eat at The Edge or any of the hustle & bustle cafes located across the residences and on main campus.

[www.withus.com/hustleandbustle/venue-info-opening-times/](http://www.withus.com/hustleandbustle/venue-info-opening-times/)



Relax at The Edge bar in Endcliffe

### Accommodation for students with families

The University has houses, flats and studios that are suitable for couples and families. All the properties are close to the University, shops and good local schools. Each property is fully-furnished, has gas central heating, and a washing machine or access to a launderette. These are very popular. You should apply as soon as possible, if you are interested. PropertyWithUS can also assist with finding family accommodation in the appropriate catchment areas for local schools. [www.sheffield.ac.uk/international/enquiry/familiesandparents](http://www.sheffield.ac.uk/international/enquiry/familiesandparents)

### Private accommodation

Sheffield has plenty of private rented accommodation. This includes private student residences, one-bedroom city-centre apartment buildings, houses for groups of friends sharing together, and accommodation for student families or couples in residential areas. You can experience the buzz of living in the heart of the city centre or choose a peaceful suburban area to call home. There is no shortage of choice. Our team at PropertywithUS can help you to find suitable private sector accommodation if you prefer this option. [www.sheffield.ac.uk/propertywithus](http://www.sheffield.ac.uk/propertywithus)

Whether you choose University or private accommodation – we'll help you find somewhere that's right for you.

[www.sheffield.ac.uk/accommodation](http://www.sheffield.ac.uk/accommodation)

✉ [accommodationoffice@sheffield.ac.uk](mailto:accommodationoffice@sheffield.ac.uk)



Ghazal from Jordan in her privately-rented West One apartment



# English Language Teaching Centre (ELTC)

The ELTC is accredited by the British Council for the quality of its services.

The English Language Teaching Centre (ELTC) offers English Language courses throughout the year. Students come here for both short and long periods of study and we are confident that we can provide you with the right course to suit your needs.

The Centre is located in a modern, well-equipped building with the latest teaching and learning technology, including interactive whiteboards, computer rooms and free Wi-Fi throughout the building.

We also make use of the excellent learning and teaching spaces across the University campus, including the state-of-the-art Information Commons, and our recently opened Diamond building, both offering 24 hour library and computing facilities.



ELTC courses and services include:

## Pre-sessional English

This course is for students who want to take a degree at the University of Sheffield. It is designed to improve your academic English skills as well as your language proficiency. You will also have the chance to settle in to life in the UK.

The course is available throughout the year - the length of study depends on your level of English and the entry requirements for your degree course.

Successfully completing a pre-sessional course will satisfy the English language requirement of your conditional academic offer.

## University English

This full-time general English course is for students at all levels, apart from complete beginners. You will develop your overall English language skills for a variety of educational, personal and professional reasons. You will also learn about British culture and experience life at a UK university.

There are 21 hours of tuition per week plus social activities and visits to local places of interest. The course runs throughout the year.

## Business & Professional English

Programmes for working professionals covering all of the essential skills and language needed to be successful in the workplace.

## Part-time English Courses

General and Exam preparation classes (IELTS, Cambridge etc.).

## English Language Support

Free classes and individual help for students on degree programmes to support their language and academic skills needs.

## Online English Language Support

Online writing advice, self-study interactive materials, webinars, flipped learning content for students at the University.

## Partners English

Free part-time English classes for partners of full-time degree students at the University of Sheffield.

## Credit Modules

Courses for Undergraduate, Study Abroad and Erasmus students providing credits towards their degree.

## Exams

We are a test centre for IELTS and Cambridge English Language Assessment exams.

"I attended the English courses provided free to registered students and designed for different requirements. This language support not only helped me improve my spoken English skills, but also helped me meet friends from all over the world."

## Bing Chen

PhD Architecture  
China

[www.sheffield.ac.uk/eltc](http://www.sheffield.ac.uk/eltc)

[✉ eltc@sheffield.ac.uk](mailto:eltc@sheffield.ac.uk)





# University of Sheffield International College

International students are Made in Sheffield.

## A dedicated learning environment

For many international students, studying in another country brings some challenges that need a little extra support. We provide a way into the University if you don't meet the direct entry requirements.

At the University of Sheffield International College, we provide a dedicated learning environment in a brand new building for our international students. During your course we'll help you to:

- Reach the academic level you need in your chosen subject
- Learn the study skills and independent learning techniques that will be vital to your successful progression
- Develop your English language skills so that you can take part in lectures and tutorials, getting the most from your studies
- Give you the confidence that you will need to progress in your studies.
- Teach you the skills that will benefit you in your future studies and career.

We have more than 100 members of staff dedicated to supporting and preparing students to excel when they go on to study at the University of Sheffield.

Our specialist understanding of students with English as a second language and different educational backgrounds makes us experts in helping students prepare for world-class university learning.

## Programmes

There are two programmes available that can be taken before undergraduate or postgraduate-level study, with multiple pathways so you can specialise in your chosen field even before starting your degree.

## International Foundation Year

An intensive two or three term programme designed specifically to provide you with a path to degree study at the University.

## Pre-Masters

This is ideal if you have already completed an undergraduate degree in your home country and want to study for a postgraduate award in the UK. Pre-masters is an intensive two-term programme

designed specifically to prepare you for taught masters study at the University.

## Study structure

You can choose one of two routes at both international foundation year and pre-masters level:

- **Business, Social Sciences and Humanities**  
This will prepare you for an undergraduate degree or a taught postgraduate degree in the Faculty of Social Sciences, which includes the Management School and the School of Law. Pathways also lead to degrees in the Faculty of Arts and Humanities, including Music, History and Archaeology.
- **Science and Engineering**  
This will prepare you for an undergraduate degree or a taught postgraduate degree in the Faculty of Engineering or Faculty of Science.

You will study core modules common to each route, plus subject-specific modules. These have been carefully designed with the University to focus on the academic areas most useful to your chosen degree.



## Scholarships up to £4,000

available to students who surpass our entry requirements



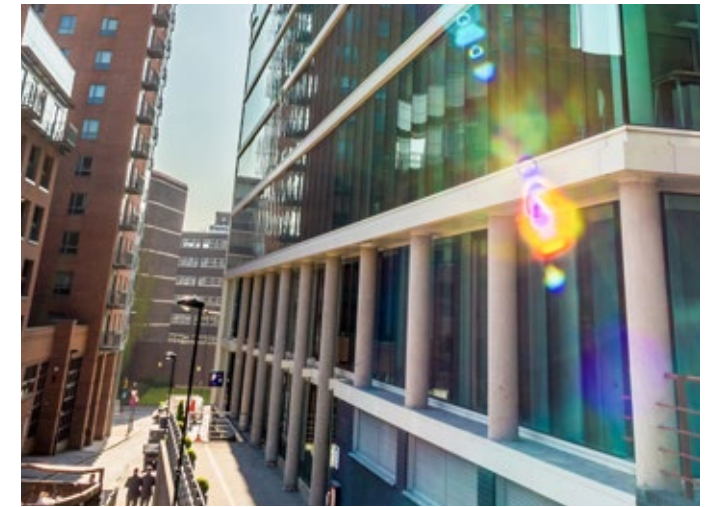
100+

staff dedicated to supporting students to progress to the university



1,000

international students come to study at the College each year



## Small class sizes with experienced tutors

You will study in small class sizes with teachers experienced in helping students learn in a second language. With a combination of lectures, tutorials, interactive learning and independent study, you'll be able to learn at your own pace. Teachers will monitor your progress and help you build confidence in your subject. They will also help you learn effective ways to study and develop your English language capability.

## Assessment

You will be assessed regularly throughout the course. Your development is monitored through continuous coursework and assessments at the end of each term or module. This may take the form of examinations. You will also need to complete a series of presentations and extended essays as part of your overall assessment.

## Contact

For more information and to apply online please visit: [www.sheffield.ac.uk/international-college](http://www.sheffield.ac.uk/international-college)

Take a tour of the University of Sheffield International College and surrounding areas of the campus: [usic.sheffield.ac.uk/tour](http://usic.sheffield.ac.uk/tour)



## Undergraduate

In England, degree courses are shorter and more intensive than those in most other countries. Our undergraduate degrees can take only three years compared with four in countries such as the USA and Australia.

[www.sheffield.ac.uk/undergraduate/courses](http://www.sheffield.ac.uk/undergraduate/courses)

## What can I study?

The best place to look for details about our courses is on our website – this has the most up-to-date and detailed information. You can find out more information about the entry requirements, the content of the course, the academic department, the staff who lecture on your course, the specialist facilities which your department can offer you, and much more. Please note that the following course information is only accurate at the time of publication and changes may be made subsequently.

The fees published here are for the academic session 2017-18 and are provided as a guide only. Fees for academic entry 2018-19 will be released in September 2017 and will be published at [www.sheffield.ac.uk/international/enquiry/money/tuitionfees](http://www.sheffield.ac.uk/international/enquiry/money/tuitionfees)

UCAS Code	Course	A Level	International Baccalaureate	English Language Requirements (IELTS) (or an equivalent English language qualification)	Tuition fee (2017-18)
<b>Animal &amp; Plant Sciences</b>					
C109	MBioSci(Hons) Biology				
C189	MBioSci(Hons) Ecology and Conservation Biology	AAA-ABB including Biology and a second science	37-35, 6 in Higher Level Biology and a second science	Overall IELTS grade of 6.5 with a minimum of 6.0 in each component	£20,470
C209	MBioSci(Hons) Plant Sciences				
C309	MBioSci(Hons) Zoology				
C10C	MBioSci(Hons) Biology with a Year Abroad	AAA including Biology and a second science	37, 6 in Higher Level Biology and a second science	Overall IELTS grade of 6.5 with a minimum of 6.0 in each component	£20,470
C100	BSc(Hons) Biology				
C180	BSc(Hons) Ecology and Conservation Biology	AAB-ABB including Biology and a second science	35-34, 6 in Higher Level Biology and a second science	Overall IELTS grade of 6.5 with a minimum of 6.0 in each component	£20,470
C200	BSc(Hons) Plant Sciences				
C300	BSc(Hons) Zoology				
C101	BSc(Hons) Biology with a Year Abroad	AAA including Biology and a second science	37, 6 in Higher Level Biology and a second science	Overall IELTS grade of 6.5 with a minimum of 6.0 in each component	£20,470
C189	BSc(Hons) Biology with a Modern Language	AAB-ABB including Biology, a second science and grade B in the modern language you wish to study	35-34, 6 in Higher Level Biology, a second science and the modern language you wish to study	Overall IELTS grade of 6.5 with a minimum of 6.0 in each component	£20,470
<b>Archaeology</b>					
F410	BSc(Hons) Archaeology				
F400	BA(Hons) Archaeology	BBB	32	Overall IELTS grade of 6.5 with a minimum of 5.5 in each component	£18,000
V400	BA(Hons) Prehistoric Archaeology				
QV64	BA(Hons) Classical and Historical Archaeology				
FV41	BA(Hons) Archaeology and History	ABB including History or Classical Civilisation	33, 6	Overall IELTS grade of 7.0 with a minimum of 6.5 in each component	£18,000

VR40	BA(Hons) Archaeology and Languages with a Year Abroad	BBB including B in an appropriate modern foreign language	32, 6 in an appropriate Higher Level modern foreign language	Overall IELTS grade of 7.0 with a minimum of 6.5 in each component	£18,000
<b>Architecture</b>					
KL00	BA(Hons) Architecture				
KK13	BA(Hons) Architecture and Landscape	AAA with at least one acceptable subject	36	Overall IELTS grade of 6.5 with a minimum of 6.0 in reading and writing, 7.0 in listening and speaking	£18,000
<b>Arts and Humanities</b>					
Y001	BA(Hons) Combined Honours – Triple	AAA – AAB dependent on the combination of A Level subjects studied. Please contact the Department for further details.	36 - 34 dependent on combination of Higher Level subjects studied. Please contact the Department for further details.	Overall IELTS grade of 7.0 with no less than 6.5 in each component	£16,000
<b>Biomedical Sciences</b>					
B900	BSc(Hons) Biomedical Science				
B902	BSc(Hons) Biomedical Science with a Year in Industry	AAB including two science subjects	34, 6 in two Higher Level science subjects	Overall IELTS grade of 7.0 with a minimum of 6.0 in each component	£20,470
B901	BSc(Hons) Biomedical Science with a Year Abroad				
B909	MBioSci(Hons) Biomedical Science	AAA including two science subjects	36, 6 in two Higher Level science subjects	Overall IELTS grade of 7.0 with a minimum of 6.0 in each component	£20,470
B911	MBioMedSci(Hons) Biomedical Science with a Year in Industry				
<b>Chemistry</b>					
F100	BSc(Hons) Chemistry				
F105	MChem(Hons) Chemistry				
F106	MChem(Hons) Chemistry with Study in Industry				
F108	MChem(Hons) Chemistry with Study in Australasia	AAB including Chemistry and either Physics, Biology/Human Biology or Mathematics	34, 6 in Higher Level Chemistry and either Physics, Biology or Mathematics	Overall IELTS grade of 6.0 with a minimum of 5.5 in each component	£20,470
F109	MChem(Hons) Chemistry with Study in America				
C720	MChem(Hons) Chemistry with Biological and Medicinal Chemistry				
F335	MPhys(Hons) Chemical Physics	AAB from Chemistry, Mathematics and Physics	34, 6 in Higher Level Chemistry, Mathematics and Physics	Overall IELTS grade of 6.5 with a minimum of 5.5 in each component	£20,470
<b>Clinical Dentistry</b>					
A200	BDS(Hons) Bachelor of Dental Surgery	AAA including Chemistry and Biology/Human Biology	36, 6 in Higher Level Chemistry and Biology	Overall IELTS grade of 7.5 with a minimum of 6.5 in each component	£20,470* (for year 1 only)
<b>East Asian Studies</b>					
T300	BA(Hons) East Asian Studies				
T472	BA(Hons) Korean Studies with Japanese				
T415	BA(Hons) Korean Studies	ABB	33	Overall IELTS grade of 6.5 with a minimum of 6.0 in each component	£18,000
T210	BA(Hons) Japanese Studies				
T172	BA(Hons) Chinese Studies with Japanese				
T110	BA(Hons) Chinese Studies				
TN42	BA(Hons) Korean Studies and Business Management				
TN12	BA(Hons) Chinese Studies and Business Management	AAB	34	Overall IELTS grade of 6.5 with a minimum of 6.0 in each component	£18,000
NT22	BA(Hons) Business Management and Japanese Studies				
T2R4	BA(Hons) Japanese Studies with Spanish				
TI14	BA(Hons) Chinese Studies with Spanish	ABB including a modern foreign language	33, 6 in a Higher Level modern foreign language	Overall IELTS grade of 7.0 with a minimum of 6.5 in each component	£18,000



UCAS Code	Course	A Level	International Baccalaureate	English Language Requirements (IELTS) (or an equivalent English language qualification)	Tuition fee (2017-18)
T2R7	BA(Hons) Japanese Studies with Russian	ABB including a modern foreign language	33, 6 in a Higher Level modern foreign language	Overall IELTS grade of 7.0 with a minimum of 6.5 in each component	£18,000
T1R7	BA(Hons) Chinese Studies with Russian	ABB including German	33, 6 in Higher Level German	Overall IELTS grade of 7.0 with a minimum of 6.5 in each component	£18,000
T2R2	BA(Hons) Japanese Studies with German	ABB including History	33, 6 in Higher Level History	Overall IELTS grade of 7.0 with a minimum of 6.5 in each component	£18,000
T1R2	BA(Hons) Chinese Studies with German	ABB including French	33, 6 in Higher Level French	Overall IELTS grade of 7.0 with a minimum of 6.5 in each component	£18,000
TV21	BA(Hons) Japanese Studies and History				
TV11	BA(Hons) Chinese Studies and History				
T1R1	BA(Hons) Chinese Studies with French				
<b>Economics</b>					
LI01	BSc(Hons) Economics	AAB including Maths	34, 5 in Higher Level Maths	Overall IELTS grade of 6.5 with a minimum of 6.0 in each component	£16,000
LI18	BSc(Hons) Economics with Finance	AAA including Maths	36, 6 in Higher Level Maths	Overall IELTS grade of 6.5 with a minimum of 6.0 in each component	£16,000
LG11	BSc(Hons) Economics and Mathematics	AAB including A in Maths	34, 6 in Higher Level Maths	Overall IELTS grade of 6.5 with a minimum of 6.0 in each component	£16,000
LI00	BA(Hons) Economics				
LI12	BA(Hons) Economics and Politics	AAB	34	Overall IELTS grade of 6.5 with a minimum of 6.0 in each component	£16,000
LV15	BA(Hons) Economics and Philosophy				
<b>Education</b>					
X300	BA(Hons) Education, Culture and Childhood	ABB	33	Overall IELTS grade of 6.5 with a minimum of 6.0 in each component	£16,000
<b>Engineering</b>					
<b>Aerospace Engineering</b>					
H400	MEng(Hons) Aerospace Engineering	AAA including Maths and Physics	36, 6 in Higher Level Maths and Physics	Overall IELTS grade of 6.5 with a minimum of 6.0 in each component	£20,470
H406	MEng(Hons) Aerospace Engineering with a Year in North America				
H405	MEng(Hons) Aerospace Engineering with a Year in Industry				
H430	MEng(Hons) Aerospace Engineering (Private Pilot Instruction)				
H402	BEng(Hons) Aerospace Engineering	AAB including Maths and Physics	34, 6 in Higher Level Maths and Physics	Overall IELTS grade of 6.5 with a minimum of 6.0 in each component	£20,470
H404	BEng(Hons) Aerospace Engineering with a Year in Industry				
H460	BEng(Hons) Aerospace Engineering (Private Pilot Instruction)				
<b>Automatic Control &amp; Systems Engineering</b>					
HLNF	MEng(Hons) Systems and Control Engineering with Management				
H660	MEng(Hons) Systems and Control Engineering				
OG31	MEng(Hons) Systems and Control Engineering with a Year in Industry				
H360	MEng(Hons) Mechatronics and Robotic Engineering	AAA including Maths and a science subject	36, 6 in Higher Level Maths and a science subject	Overall IELTS grade of 6.0 with a minimum of 5.5 in each component	£20,470
2S15	MEng(Hons) Mechatronic and Robotic Engineering with a Year in Industry				
8M74	MEng(Hons) Computer Systems Engineering with a Year in Industry				
G500	MEng(Hons) Computer Systems Engineering				
HN62	BEng(Hons) Systems and Control Engineering (Engineering Management)				
H690	BEng(Hons) Systems and Control Engineering	AAB including Maths and a science subject	34, 6 in Higher Level Maths and a science subject	Overall IELTS grade of 6.0 with a minimum of 5.5 in each component	£20,470
8L16	BEng(Hons) Systems and Control Engineering with a Year in Industry				

H361	BEng(Hons) Mechatronics and Robotic Engineering				
2G36	BEng(Hons) Mechatronic and Robotic Engineering with a Year in Industry	AAB including Maths and a science subject	34, 6 in Higher Level Maths and a science subject	Overall IELTS grade of 6.0 with a minimum of 5.5 in each component	£20,470
2A47	BEng(Hons) Computer Systems Engineering with a Year in Industry				
HL30	BEng(Hons) Computer Systems Engineering				
<b>Chemical and Biological Engineering</b>					
H800	MEng(Hons) Chemical Engineering				
H810	BEng(Hons) Chemical Engineering				
H990	MEng(Hons) Chemical Engineering with Nuclear Technology				
H840	MEng(Hons) Chemical Engineering with Energy				
H8F1	MEng(Hons) Chemical Engineering with Chemistry	AAA including Maths and a science subject and excluding general studies and critical thinking	36, 6 in Higher Level Maths and Chemistry	Overall IELTS grade of 6.0 with a minimum of 5.5 in each component	£20,470
H8J7	MEng(Hons) Chemical Engineering with Biotechnology				
H804	MEng(Hons) Chemical Engineering with a Year in Industry				
<b>Civil &amp; Structural Engineering</b>					
H210	MEng(Hons) Civil and Structural Engineering				
2H26	MEng(Hons) Civil Engineering with a Year in Industry				
H2T9	MEng(Hons) Civil Engineering with a Modern Language				
H200	MEng(Hons) Civil Engineering				
8L55	MEng(Hons) Civil and Structural Engineering with a Year in Industry				
HK21	MEng(Hons) Structural Engineering and Architecture				
2G91	MEng(Hons) Architectural Engineering Design with a Year in Industry				
HK2D	MEng(Hons) Architectural Engineering Design				
8T63	BEng(Hons) Civil Engineering with a Year in Industry				
H202	BEng(Hons) Civil Engineering	AAA including Mathematics	36, 6 in Higher Level Mathematics	Overall IELTS grade of 6.5 with a minimum of 6.0 in each component	£20,470
<b>Computer Science</b>					
G400	MComp(Hons) Computer Science				
G4G1	MComp(Hons) Computer Science with Mathematics				
G404	MComp(Hons) Computer Science with a Year in Industry				
G704	MComp(Hons) Artificial Intelligence and Computer Science with a Year in Industry				
G700	MComp(Hons) Artificial Intelligence and Computer Science				
G4G2	MComp(Hons) Computer Science with Mathematics with a Year in Industry				
G654	MEng(Hons) Software Engineering with a Year in Industry				
G650	MEng(Hons) Software Engineering				
G402	BSc(Hons) Computer Science				
G403	BSc(Hons) Computer Science with a Year in Industry				
GG74	BSc(Hons) Artificial Intelligence and Computer Science				
GG75	BSc(Hons) Artificial Intelligence and Computer Science with a Year in Industry	AAB including Maths	34, 6 in Higher Level Maths	Overall IELTS grade of 6.5 with a minimum of 6.0 in each component	£20,470



UCAS Code	Course	A Level	International Baccalaureate	English Language Requirements (IELTS) (or an equivalent English language qualification)	Tuition fee (2017-18)
G604	BEng(Hons) Software Engineering with a Year in Industry	AAB including Maths	34, 6 in Higher Level Maths	Overall IELTS grade of 6.5 with a minimum of 6.0 in each component	£20,470
G600	BEng(Hons) Software Engineering				
GG41	BSc(Hons) Computer Science and Mathematics				
GG42	BSc(Hons) Computer Science and Mathematics with a Year in Industry	AAB including A in Maths	34, 6 in Higher Level Maths	Overall IELTS grade of 6.5 with a minimum of 6.0 in each component	£20,470
G651	MEng(Hons) Software Engineering with a Foundation Year	ABB	34	Overall IELTS grade of 6.5 with a minimum of 6.0 in each component	£20,470
<b>Electronic &amp; Electrical Engineering</b>					
H616	MEng(Hons) Microelectronics with a Year in Industry				
H614	MEng(Hons) Microelectronics				
H615	MEng(Hons) Electronic Engineering with a Year in Industry				
H613	MEng(Hons) Electronic Engineering				
H619	MEng(Hons) Electronic and Electrical Engineering with a Modern Language	AAA including Maths and either Physics, Chemistry or Electronics	36, 6 in Higher Level Maths and either Physics, Chemistry or Electronics	Overall IELTS grade of 6.5 with a minimum of 6.0 in each component	£20,470
H649	MEng(Hons) Electronic and Communications Engineering with a Year in Industry				
H645	MEng(Hons) Electronic and Communications Engineering				
H623	MEng(Hons) Electrical Engineering with a Year in Industry				
H621	MEng(Hons) Electrical Engineering				
H651	MEng(Hons) Digital Electronics				
H629	MEng(Hons) Electrical and Electronic Engineering	AAA including Maths and either Physics, Chemistry or Electronics	36, 6 in Higher Level Maths and either Physics, Chemistry or Electronics	Overall IELTS grade of 6.5 with a minimum of 6.0 in each component	£20,470
H634	MEng(Hons) Electrical and Electronic Engineering				
H611	BEng(Hons) Electronic Engineering with a Year in Industry				
H610	BEng(Hons) Electronic Engineering				
H648	BEng(Hons) Electronic and Communications Engineering with a Year in Industry				
H647	BEng(Hons) Electronic and Communications Engineering				
H622	BEng(Hons) Electrical Engineering with a Year in Industry				
H620	BEng(Hons) Electrical Engineering				
H633	BEng(Hons) Electrical and Electronic Engineering with a Year in Industry	AAB including Maths and either Physics, Chemistry or Electronics	34, 6 in Higher Level Maths and either Physics, Chemistry or Electronics	Overall IELTS grade of 6.5 with a minimum of 6.0 in each component	£20,470
H628	BEng(Hons) Electrical and Electronic Engineering				
<b>Engineering</b>					
H100	MEng(Hons) Engineering	AAA including Maths and Physics	36, 6 in Higher Level Maths and Physics	Overall IELTS grade of 6.5 with a minimum of 6.0 in each component	£20,470
H104	MEng(Hons) Engineering with a Year in Industry	ABB	34	Overall IELTS grade of 6.5 with a minimum of 6.0 in each component	£20,470
H160	BEng(Hons) Bioengineering with a Foundation Year				
H673	BEng(Hons) Bioengineering	AAB including Maths and two other science subjects	35, 6 in Maths and two other science subjects at Higher Level	Overall IELTS grade of 6.5 with a minimum of 6.0 in each component	£20,470
H67H	BEng(Hons) Bioengineering with a Year in Industry				
<b>Materials Science &amp; Engineering</b>					
J500	MEng(Hons) Materials Science and Engineering	AAA including two of Maths, Physics or Chemistry	36, 6 in two of Higher Level Maths, Physics or Chemistry	Overall IELTS grade of 6.5 with a minimum of 6.5 in each component	£20,470
J505	MEng(Hons) Materials Science and Engineering with a Year in Industry (Research)				

F2H8	MEng(Hons) Materials Science with Nuclear Engineering	AAA including two of Maths, Physics or Chemistry	36, 6 in two of Higher Level Maths, Physics or Chemistry	Overall IELTS grade of 6.5 with a minimum of 6.5 in each component	£20,470
J200	MEng(Hons) Metallurgy				
JH9P	MEng(Hons) Materials Science and Engineering (Biomaterials)	AAA including two of Maths, Biology, Physics or Chemistry	36, 6 in two of Higher Level Maths, Biology, Physics or Chemistry	Overall IELTS grade of 6.5 with a minimum of 6.5 in each component	£20,470
JH51	BEng(Hons) Materials Science and Engineering				
J591	BEng(Hons) Materials Science and Engineering with a Year in Industry	AAB including two of Maths, Physics or Chemistry	34, 6 in two of Higher Level Maths, Physics or Chemistry	Overall IELTS grade of 6.5 with a minimum of 6.5 in each component	£20,470
FHF1	BEng(Hons) Materials Science and Engineering (Industrial Management)				
JH56	BEng(Hons) Materials Science and Engineering (Biomaterials)	AAB including two of Maths, Physics, Chemistry or Biology	34, 6 in two of Higher Level Maths, Physics, Chemistry or Biology	Overall IELTS grade of 6.5 with a minimum of 6.5 in each component	£20,470
<b>Mechanical Engineering</b>					
H300	MEng(Hons) Mechanical Engineering				
H304	MEng(Hons) Mechanical Engineering with a Year in Industry				
H3R4	MEng(Hons) Mechanical Engineering with Spanish				
H3R3	MEng(Hons) Mechanical Engineering with Italian				
H3N2	MEng(Hons) Mechanical Engineering with Industrial Management				
H3R1	MEng(Hons) Mechanical Engineering with French				
H3H6	MEng(Hons) Mechanical Engineering with Biomechanics				
H3T7	MEng(Hons) Mechanical Engineering with a Year in North America	AAA including Maths and at least one of Physics or Chemistry	36, 6 in Higher Level Maths and at least one of Physics or Chemistry	Overall IELTS grade of 6.5 with a minimum of 6.0 in each component	£20,470
H3H8	MEng(Hons) Mechanical Engineering with Nuclear Technology				
H3R2	MEng(Hons) Mechanical Engineering with German				
H302	BEng(Hons) Mechanical Engineering				
H305	BEng(Hons) Mechanical Engineering with a Year in Industry				
<b>English</b>					
QR17	BA(Hons) Linguistics and Russian	ABB including B in a foreign language	33, 6 in Higher Level foreign language.	Overall IELTS grade of 7.0 with a minimum of 6.5 in each component	£16,000
QR15	BA(Hons) Linguistics and Philosophy	ABB	33	Overall IELTS grade of 7.0 with a minimum of 6.5 in each component	£16,000
QR12	BA(Hons) Linguistics and Japanese Studies	ABB including grade B in a foreign language	33, 6 in Higher Level foreign language	Overall IELTS grade of 7.0 with a minimum of 6.5 in each component	£18,000
QR14	BA(Hons) Linguistics and Hispanic Studies	ABB including B in Spanish or another foreign language	33, 6 in Higher Level Spanish or another foreign language	Overall IELTS grade of 7.0 with a minimum of 6.5 in each component	£16,000
QL33	BA(Hons) English Language and Sociology	ABB	33	Overall IELTS grade of 7.0 with a minimum of 6.5 in each component	£16,000
Q304	BA(Hons) English Language and Literature	AAB including either English Language, English Literature or English Language & Literature	34, 6 in Higher Level English Language, English Literature or English Language & Literature	Overall IELTS grade of 7.0 with a minimum of 6.5 in each component	£16,000
Q3Q1	BA(Hons) English Language and Linguistics	AAB, plus evidence of interest in language and linguistics, demonstrated through the Personal Statement.	34, plus evidence of interest in language and linguistics, demonstrated through the Personal Statement.	Overall IELTS grade of 7.0 with a minimum of 6.5 in each component	£16,000
Q306	BA(Hons) English Literature	AAB including English Literature or English Language & Literature.	34, 6 in Higher Level English Literature or English Language & Literature	Overall IELTS grade of 7.0 with a minimum of 6.5 in each component	£16,000
QW64	BA(Hons) English and Theatre	AAB-ABB including English Literature or English Language & Literature or Drama, depending on practical experience of theatre. Please contact the Department for further information.	34, 6 in Higher Level English Literature or English Language & Literature or Drama.	Overall IELTS grade of 7.0 with a minimum of 6.5 in each component	£16,000



UCAS Code	Course	A Level	International Baccalaureate	English Language Requirements (IELTS) (or an equivalent English language qualification)	Tuition fee (2017-18)
QR37	BA(Hons) English and Russian	AAB including English Literature or English Language & Literature and a foreign language	34, 6 in Higher Level English Literature or English Language & Literature and a foreign language	Overall IELTS grade of 7.0 with a minimum of 6.5 in each component	£16,000
QR35	BA(Hons) English and Philosophy	AAB including English Literature or English Language & Literature	34, 6 in Higher Level English Literature or English Language & Literature	Overall IELTS grade of 7.0 with a minimum of 6.5 in each component	£16,000
QR63	BA(Hons) English and Music	ABB including English Literature or English Language & Literature and Music (or Grade 8 Practical (ABRSM/Trinity/Rockschool or equivalent) at Merit + Grade 5 theory (ABRSM/Trinity) at Merit)	33, 6 in Higher Level English Literature or English Language & Literature and Music (or Grade 8 Practical (ABRSM/Trinity/Rockschool or equivalent) at Merit + Grade 5 theory (ABRSM/Trinity) at Merit)	Overall IELTS grade of 7.0 with a minimum of 6.5 in each component	£16,000
QR31	BA(Hons) English and History	AAB including English Literature or English Language & Literature and History or Classical Civilisation	34, 6 in Higher Level English Literature or English Language & Literature and History	Overall IELTS grade of 7.0 with a minimum of 6.5 in each component	£16,000
QR34	BA(Hons) English and Hispanic Studies	AAB including English Literature or English Language & Literature and either Spanish or another foreign language	34, 6 in Higher Level English Literature or English Language & Literature and either Spanish or another foreign language	Overall IELTS grade of 7.0 with a minimum of 6.5 in each component	£16,000
QR32	BA(Hons) English and German	AAB including English Literature or English Language & Literature and either German or another foreign language.	34, 6 in Higher Level English Literature or English Language & Literature and either German or another foreign language.	Overall IELTS grade of 7.0 with a minimum of 6.5 in each component	£16,000
QR31	BA(Hons) English and French	AAB including English Literature or English Language & Literature and French or another modern foreign language	34, 6 in Higher Level English Literature or English Language & Literature and French or another modern foreign language	Overall IELTS grade of 7.0 with a minimum of 6.5 in each component	£16,000
<b>French Studies</b>					
RL20	BA(Hons) French Studies				
RL17	BA(Hons) French and Russian				
RL12	BA(Hons) French and Politics				
RV15	BA(Hons) French and Philosophy				
RL14	BA(Hons) French and Hispanic Studies				
RL12	BA(Hons) French and German				
RL19	BA(Hons) French with Polish				
RL10	BA(Hons) French with Luxembourg Studies				
RL12	BA(Hons) French with Japanese				
RL19	BA(Hons) French with Dutch				
RL17	BA(Hons) French with Czech				
RV13	BA(Hons) French and Music	ABB including French or another modern foreign language and Music (or Grade 8 Practical (ABRSM/Trinity/Rockschool or equivalent) at Merit + Grade 5 theory (ABRSM/Trinity) at Merit)	33, 6 in Higher Level French or another modern foreign language and Music (or Grade 8 Practical (ABRSM/Trinity/Rockschool or equivalent) at Merit + Grade 5 theory (ABRSM/Trinity) at Merit)	Overall IELTS grade of 7.0 with a minimum of 6.5 in each component	£18,000

QR11	BA(Hons) French and Linguistics	ABB including French or another modern foreign language	33, 6 in Higher Level French or another modern foreign language	Overall IELTS grade of 7.0 with a minimum of 6.5 in each component	£16,000
RV11	BA(Hons) French and History	ABB including History or Classical Civilisation and French (or another modern foreign language)	33, 6 in Higher Level History and French or another modern foreign language	Overall IELTS grade of 7.0 with a minimum of 6.5 in each component	£16,000
RL11	BA(Hons) French and Economics	AAB including French or another modern foreign language	34, 6 in Higher Level French or another modern foreign language	Overall IELTS grade of 7.0 with a minimum of 6.5 in each component	£16,000
RV12	BA(Hons) French and Business Management	ABB including French or another modern foreign language	33, 6 in Higher Level French or another modern foreign language	Overall IELTS grade of 7.0 with a minimum of 6.5 in each component	£16,000
<b>Geography</b>					
F800	BS<(Hons) Geography				
F802	BS<(Hons) Geography with a Year Abroad				
L700	BA(Hons) Geography				
L702	BA(Hons) Geography with a Year Abroad				
F803	MGeog(Hons) Geography				
F804	MGeogSci(Hons) Geography				
F900	BS<(Hons) Environmental Science				
F903	BS<(Hons) Environmental Science with a Year Abroad				
F902	MEnvSci(Hons) Environmental Science				
<b>German Studies</b>					
R220	BA(Hons) Germanic Studies				
R2RR	BA(Hons) German with Polish				
R2R3	BA(Hons) German with Luxembourg Studies				
R2R9	BA(Hons) German with Dutch				
R2R7	BA(Hons) German and Czech				
RL22	BA(Hons) German and Politics				
RV25	BA(Hons) German and Philosophy				
RV22	BA(Hons) German and Business Management				
R2T2	BA(Hons) Germanic Studies with Japanese				
RR27	BA(Hons) German and Russian				
QR11	BA(Hons) French and Linguistics	ABB including French or another modern foreign language	33, 6 in Higher Level French or another modern foreign language	Overall IELTS grade of 7.0 with a minimum of 6.5 in each component	£16,000
RV11	BA(Hons) French and History	ABB including History or Classical Civilisation and French (or another modern foreign language)	33, 6 in Higher Level History and French or another modern foreign language	Overall IELTS grade of 7.0 with a minimum of 6.5 in each component	£16,000
RL11	BA(Hons) French and Economics	AAB including French or another modern foreign language	34, 6 in Higher Level French or another modern foreign language	Overall IELTS grade of 7.0 with a minimum of 6.5 in each component	£16,000
RV12	BA(Hons) French and Business Management	ABB including French or another modern foreign language	33, 6 in Higher Level French or another modern foreign language	Overall IELTS grade of 7.0 with a minimum of 6.5 in each component	£16,000
<b>Geography</b>					
F800	BS<(Hons) Geography				
F802	BS<(Hons) Geography with a Year Abroad				
L700	BA(Hons) Geography				
L702	BA(Hons) Geography with a Year Abroad				
F803	MGeog(Hons) Geography				
F804	MGeogSci(Hons) Geography				
F900	BS<(Hons) Environmental Science				
F903	BS<(Hons) Environmental Science with a Year Abroad				
F902	MEnvSci(Hons) Environmental Science				
<b>German Studies</b>					
R220	BA(Hons) Germanic Studies				
R2RR	BA(Hons) German with Polish				
R2R3	BA(Hons) German with Luxembourg Studies				
R2R9	BA(Hons) German with Dutch				
R2R7	BA(Hons) German and Czech				
RL22	BA(Hons) German and Politics				
RV25	BA(Hons) German and Philosophy				
RV22	BA(Hons) German and Business Management				
R2T2	BA(Hons) Germanic Studies with Japanese				
RR27	BA(Hons) German and Russian				



UCAS Code	Course	A Level	International Baccalaureate	English Language Requirements (IELTS) (or an equivalent English language qualification)	Tuition fee (2017-18)
RW23	BA(Hons) German and Music	ABB including German or another modern foreign language and Music (or Grade 8 Practical (ABRSM/Trinity/Rockschool or equivalent) at Merit + Grade 5 theory (ABRSM/Trinity) at Merit)	33, 6 in Higher Level German or another modern foreign language and Music (or Grade 8 Practical (ABRSM/Trinity/Rockschool or equivalent) at Merit + Grade 5 theory (ABRSM/Trinity) at Merit)	Overall IELTS grade of 7.0 with a minimum of 6.5 in each component	£18,000
RV21	BA(Hons) German and History	ABB including History or Classical Civilisation and German or another modern foreign language	33, 6 in Higher Level History and German or another modern foreign language	Overall IELTS grade of 7.0 with a minimum of 6.5 in each component	£16,000
RR24	BA(Hons) German and Hispanic Studies	ABB including German or Spanish	33, 6 in Higher Level German or Spanish	Overall IELTS grade of 7.0 with a minimum of 6.5 in each component	£16,000
RL21	BA(Hons) German and Economics	AAB including German or another modern foreign language	34, 6 in Higher Level German or another modern foreign language	Overall IELTS grade of 7.0 with a minimum of 6.5 in each component	£16,000
<b>Hispanic Studies</b>					
R410	BA(Hons) Hispanic Studies	ABB including Spanish or another modern foreign language	33, 6 in Higher Level Spanish or another modern foreign language	Overall IELTS grade of 7.0 with a minimum of 6.5 in each component	£16,000
RL42	BA(Hons) Hispanic Studies and Politics				
RN42	BA(Hons) Hispanic Studies and Business Management				
R4RR	BA(Hons) Hispanic Studies with Polish	BBB including Spanish or another modern foreign language	32, 6 in Higher Level Spanish or another modern foreign language	Overall IELTS grade of 7.0 with a minimum of 6.5 in each component	£16,000
R4R7	BA(Hons) Hispanic Studies with Czech				
R4T2	BA(Hons) Hispanic Studies with Japanese	ABB including Spanish or another modern foreign language	33, 6 in Higher Level Spanish or another modern foreign language	Overall IELTS grade of 7.0 with a minimum of 6.5 in each component	£18,000
RL41	BA(Hons) Hispanic Studies and Economics	AAB including Spanish or another modern foreign language	34, 6 in Higher Level Spanish or another modern foreign language	Overall IELTS grade of 7.0 with a minimum of 6.5 in each component	£16,000
<b>History</b>					
V100	BA(Hons) History	AAB including an A in History or Classical Civilisation	34, 6 in Higher Level History	Overall IELTS grade of 7.0 with a minimum of 6.5 in each component	£16,000
VL12	BA(Hons) History and Politics				
V1R9	BA(Hons) History with Dutch				
R771	BA(Hons) History and Russian	ABB including History or Classical Civilisation and a modern foreign language	33, 6 in Higher Level History and a modern foreign language	Overall IELTS grade of 7.0 with a minimum of 6.5 in each component	£16,000
VL13	BA(Hons) History and Sociology				
W115	BA(Hons) History and Philosophy	AAB including History or Classical Civilisation	34, 6 in Higher Level History	Overall IELTS grade of 7.0 with a minimum of 6.5 in each component	£16,000
RV41	BA(Hons) History and Hispanic Studies	ABB including History or Classical Civilisation and a modern foreign language	33, 6 in Higher Level History and either Spanish or another modern foreign language	Overall IELTS grade of 7.0 with a minimum of 6.5 in each component	£16,000
<b>Human Communication Sciences</b>					
QC18	BSc(Hons) Speech and Language Science	ABB	34	Overall IELTS grade of 7.5 with a minimum of 7.0 in each component	£20,470
B621	BMS(Hons) Speech and Language Therapy	AAB	34	Overall IELTS grade of 8.0 with a minimum of 7.5 in each component	£20,470
<b>Journalism Studies</b>					
P500	BA(Hons) Journalism Studies	ABB	33	Overall IELTS grade of 7.5 with a minimum of 7.5 in each component	£18,000
<b>Landscape</b>					
KC39	BSc(Hons) Landscape Architecture	ABB	33	Overall IELTS grade of 6.5 with a minimum of 5.5 in each component	£18,000
K3K4	BA(Hons) Landscape Architecture				

<b>Law</b>					
M100	LLB(Hons) Law	AAA	36	Overall IELTS grade of 7.0 with a minimum of 6.0 in each component	£16,000
M120	LLB(Hons) Law (European and International)				
M900	BA(Hons) Criminology	AAB	34	Overall IELTS grade of 7.0 with a minimum of 6.0 in each component	£16,000
M930	LLB(Hons) Law and Criminology				
MDM4	LLB(Hons) Law (with Spanish Law)	AAB including Spanish	34, 6 in Higher Level Spanish	Overall IELTS grade of 7.0 with a minimum of 6.0 in each component	£16,000
MMI3	LLB(Hons) Law (with German Law)	AAB including German	34, 6 in Higher Level German	Overall IELTS grade of 7.0 with a minimum of 6.0 in each component	£16,000
MMI2	LLB(Hons) Law (with French Law)	AAB including French	34, 6 in Higher Level French	Overall IELTS grade of 7.0 with a minimum of 6.0 in each component	£16,000
<b>Management School</b>					
N420	BA(Hons) Accounting & Financial Management	ABB	33	Overall IELTS grade of 6.5 with a minimum of 6.0 in Reading, 6.0 in Writing, 6.0 in Listening and 5.5 in Speaking	£16,000
NL41	BA(Hons) Accounting & Financial Management and Economics	ABB	34	Overall IELTS grade of 6.5 with a minimum of 6.0 in each component	£16,000
NL21	BA(Hons) Business Management and Economics	ABB	33	Overall IELTS grade of 6.5 with a minimum of 6.0 in Reading, 6.0 in Writing, 6.0 in Listening and 5.5 in Speaking	£16,000
N200	BA(Hons) Business Management	ABB	33	Overall IELTS grade of 6.5 with a minimum of 6.0 in Reading, 6.0 in Writing, 6.0 in Listening and 5.5 in Speaking	£16,000
N120	BA(Hons) International Business Management with Study Abroad				
NG41	BA(Hons) Accounting and Financial Management and Maths	AAB including A in Maths	34, 6 in Higher Level Maths	Overall IELTS grade of 6.5 with a minimum of 6.0 in each component	£16,000
NC21	BA(Hons) Business Management and Mathematics				
<b>Mathematics &amp; Statistics</b>					
G103	MMath(Hons) Mathematics	AAA including Maths	36, 6 in Higher Level Maths	Overall IELTS grade of 6.0 with a minimum of 5.5 in each component	£18,000
G110	MMath(Hons) Mathematics and Statistics				
G102	MMath(Hons) Mathematics with Study in Europe	AAB including A in Maths and B in at least AS Level modern foreign language	34, 6 in Higher Level Maths and 6 in a Standard Level modern foreign language	Overall IELTS grade of 6.0 with a minimum of 5.5 in each component	£18,000
G106	MMath(Hons) Mathematics with Study Abroad	AAA including Maths	36, 6 in Higher Level Maths	Overall IELTS grade of 7.0 with a minimum of 6.5 in each component	£18,000
G1R4	MMath(Hons) Mathematics with Spanish Language	AAB including A in Maths and B in Spanish	34, 6 in Higher Level Maths and Spanish	Overall IELTS grade of 6.0 with a minimum of 5.5 in each component	£18,000
G1R2	MMath(Hons) Mathematics with German Language	AAB including A in Maths and B in German	34, 6 in Higher Level Maths and German	Overall IELTS grade of 6.0 with a minimum of 5.5 in each component	£18,000
G1R1	MMath(Hons) Mathematics with French Language	AAB including A in Maths and B in French	34, 6 in Higher Level Maths and French	Overall IELTS grade of 6.0 with a minimum of 5.5 in each component	£18,000
G100	BSc(Hons) Mathematics	AAB including A in Maths	34, 6 in Higher Level Maths	Overall IELTS grade of 6.0 with a minimum of 5.5 in each component	£18,000
G112	BSc(Hons) Mathematics and Statistics				
VG51	BSc(Hons) Mathematics and Philosophy	AAB including A in Maths	34, 6 in Higher Level Maths	Overall IELTS grade of 6.5 with a minimum of 6.0 in each component	£18,000
GN13	BSc(Hons) Financial Mathematics	AAB including A in Maths	34, 6 in Higher Level Maths	Overall IELTS grade of 6.5 with a minimum of 6.0 in each component	£18,000
GN13	BSc(Hons) Financial Mathematics	AAB including A in Maths	35, 6 in Higher Level Maths	Overall IELTS grade of 6.5 with a minimum of 6.0 in each component	£18,000
<b>The Medical School</b>					
A100	MBChB(Hons) Medicine (five year)	AAA including Chemistry and another science subject.	36, 6 in three Higher Level subjects to include Chemistry and another science subject. No less than 4 in all Standard Level subjects	Overall IELTS grade of 7.5 with a minimum of 7.0 in each component	£20,470 (the fee will increase significantly in 2018 due to changes in government legislation)



UCAS Code	Course	A Level	International Baccalaureate	English Language Requirements (IELTS) (or an equivalent English language qualification)	Tuition fee (2017-18)
<b>Modern Languages</b>					
T900	BA(Hons) Modern Languages	ABB including one of French, German, Spanish or Russian	33, 6 in Higher Level French, German, Spanish or Russian	Overall IELTS grade of 7.0 with a minimum of 6.5 in each component	£16,000
<b>Molecular Biology and Biotechnology</b>					
C749	MBioSci(Hons) Medical Biochemistry				
C791	MBioSci(Hons) Biochemistry and Molecular Cell Biology				
C709	MBioSci(Hons) Biochemistry				
C741	BSc(Hons) Medical Biochemistry				
C790	BSc(Hons) Biochemistry and Molecular Cell Biology	AAA-ABB including Chemistry and another science subject	38-34, 6 in two Higher Level science subjects including Chemistry	Overall IELTS grade of 7.0 with a minimum of 6.0 in each component	£20,470
C700	BSc(Hons) Biochemistry				
CC79	MBioSci(Hons) Biochemistry and Microbiology				
CC7C	MBioSci(Hons) Biochemistry and Genetics				
CC75	BSc(Hons) Biochemistry and Microbiology				
CC74	BSc(Hons) Biochemistry and Genetics				
C433	MBioSci(Hons) Medical Genetics				
CC4R	MBioSci(Hons) Genetics and Molecular Cell Biology				
C409	MBioSci(Hons) Genetics				
C431	BSc(Hons) Medical Genetics				
CC47	BSc(Hons) Genetics and Molecular Cell Biology				
C400	BSc(Hons) Genetics				
CC4C	MBioSci(Hons) Genetics and Microbiology	AAA-ABB including two science subjects. Chemistry required at A Level or as an additional AS Level	38-34, 6 in two Higher Level science subjects including Chemistry	Overall IELTS grade of 7.0 with a minimum of 6.0 in each component	£20,470
CC45	BSc(Hons) Genetics and Microbiology				
C509	MBioSci(Hons) Microbiology				
C523	MBioSci(Hons) Medical Microbiology				
C500	BSc(Hons) Microbiology				
C521	BSc(Hons) Medical Microbiology				
C449	MBioSci(Hons) Molecular Biology				
C440	BSc(Hons) Molecular Biology				
<b>Music</b>					
W802	BMus(Hons) Music	ABB including Music and/or Music Technology or ABB + Grade 8 Practical (ABRSM/Trinity/Rockschool or equivalent) at Merit + Grade 5 theory (ABRSM/Trinity) at Merit	33, 6 in Higher Level Music or 33 + Grade 8 Practical (ABRSM/Trinity/Rockschool or equivalent) at Merit + Grade 5 theory (ABRSM/Trinity) at Merit	Overall IELTS grade of 6.5 with a minimum of 6.5 in each component	£18,000
W653	BA(Hons) Music and Philosophy				
WTH4	BA(Hons) Music and Korean Studies	ABB including Music and/or Music Technology or ABB + Grade 8 Practical (ABRSM/Trinity/Rockschool or equivalent) at Merit + Grade 5 theory (ABRSM/Trinity) at Merit	33, 6 in Higher Level Music or 33 + Grade 8 Practical (ABRSM/Trinity/Rockschool or equivalent) at Merit + Grade 5 theory (ABRSM/Trinity) at Merit	Overall IELTS grade of 6.5 with a minimum of 6.0 in each component	£18,000
WT34	BA(Hons) Music and East Asian Studies				
WT31	BA(Hons) Music and Chinese Studies				

RW43	BA(Hons) Music and Hispanic Studies	ABB including Music and/or Music Technology, or ABB + Grade 8 Practical (ABRSM/Trinity/Rockschool or equivalent) at Merit + Grade 5 theory (ABRSM/Trinity) at Merit and either Spanish or another modern foreign language	33, 6 in both Higher Level Music and Spanish (or another modern foreign language). If Music is not studied, Grade 8 Practical (ABRSM/Trinity/Rockschool or equivalent) at Merit + Grade 5 theory (ABRSM/Trinity) at Merit is accepted.	Overall IELTS grade of 7.0 with a minimum of 6.5 in each component	£18,000
<b>Nursing and Midwifery</b>					
B991	BMedSci(Hons) Health and Human Sciences	ABB-BBB	33-32	Overall IELTS grade of 6.5 with a minimum of 6.0 in each component	£20,470
B740	BMedSci(Hons) Nursing (Adult)	BBB +DBS check + Occupational Health Check required	32	Overall IELTS grade of 7 with a minimum of 7.0 in each component	£20,470
<b>Orthoptics</b>					
B520	BMedSci(Hons) Orthoptics	BBB including one of Biology/Human Biology, Maths, Chemistry or Physics. Biology is preferred, but not essential + interview.	32, 6 in either Higher Level Biology, Maths, Chemistry or Physics. Biology is preferred, but not essential + interview	Overall IELTS grade of 7.0 with a minimum of 6.5 in each component	TBC
<b>Philosophy</b>					
V500	BA(Hons) in Philosophy	AAB	34	Overall IELTS grade of 7.0 with a minimum of 6.5 in each component	£16,000
RV45	BA(Hons) Philosophy and Hispanic Studies	ABB including Spanish or another modern foreign language	33, 6 in Higher Level Spanish or another modern foreign language	Overall IELTS grade of 7.0 with a minimum of 6.5 in each component	£16,000
V566	BA(Hons) Philosophy and Religion	ABB	33	Overall IELTS grade of 6.0 with a minimum of 5.5 in each component	£16,000
<b>Physics &amp; Astronomy</b>					
F301	MPhys(Hons) Physics				
F3V5	MPhys(Hons) Physics with Philosophy				
F304	MPhys(Hons) Theoretical Physics with Study Abroad				
F321	MPhys(Hons) Theoretical Physics				
F305	MPhys(Hons) Physics with Study Abroad	AAA including Maths and Physics	38, 6 in Higher Level Maths and Physics	Overall IELTS grade of 6.5 with a minimum of 6.5 in each component	£20,470
F371	MPhys(Hons) Physics with Medical Physics				
F3GK	MPhys(Hons) Physics with Computer Science				
FF3M	MPhys(Hons) Physics and Astrophysics with Study Abroad				
F3F5	MPhys(Hons) Physics and Astrophysics				
F300	BSc(Hons) Physics				
F344	BSc(Hons) Theoretical Physics				
F350	BSc(Hons) Physics with Medical Physics				
F3G4	BSc(Hons) Physics with Computer Science	AAB including Maths and Physics	34, 6 in Higher Level Maths and Physics	Overall IELTS grade of 6.5 with a minimum of 6.5 in each component	£20,470
FV35	BSc(Hons) Physics and Philosophy	AAA including Maths and Physics	38, 6 in Higher Level Maths or Physics	Overall IELTS grade of 6.5 with a minimum of 6.5 in each component	£20,470
FF35	BSc(Hons) Physics and Astrophysics	AAB including Maths and Physics	36, 6 in Higher Level Maths or Physics	Overall IELTS grade of 6.5 with a minimum of 5.5 in each component	£20,470
F309	MPhys(Hons) Physics with a Foundation Year	BBB including one of Maths or Physics	32, 6 in Higher Level Maths or Physics	Overall IELTS grade of 6.5 with a minimum of 6.5 in each component	£20,470
<b>Politics</b>					
L210	BA(Hons) Politics				
LV25	BA(Hons) Politics and Philosophy	AAB	34	Overall IELTS grade of 6.5 with a minimum of 6.0 in each component	£16,000
L201	BA(Hons) International Relations and Politics				
LL24	BA(Hons) International Politics & Security Studies				
LL23	BA(Hons) Politics and Sociology	ABB	33	Overall IELTS grade of 6.5 with a minimum of 6.0 in each component	£16,000



UCAS Code	Course	A Level	International Baccalaureate	English Language Requirements (IELTS) (or an equivalent English language qualification)	Tuition fee (2017-18)
<b>Psychology</b>					
C600	BSc(Hons) Psychology	AAB including a science subject	34, 6 in a Higher Level science subject	Overall IELTS grade of 6.5 with a minimum of 6.0 in each component	£20,470
<b>Russian &amp; Slavonic Studies</b>					
R710	BA(Hons) Russian Studies	BBB including Russian or another modern foreign language	32, 6 in Higher Level Russian or another modern foreign language	Overall IELTS grade of 7.0 with a minimum of 6.5 in each component	£16,000
R7RR	BA(Hons) Russian with Polish				
R7A7	BA(Hons) Russian with Czech				
RL72	BA(Hons) Russian and Politics	ABB including a modern foreign language	33, 6 in a Higher Level modern foreign language	Overall IELTS grade of 7.0 with a minimum of 6.5 in each component	£16,000
R7F5	BA(Hons) Russian and Philosophy				
RN72	BA(Hons) Russian and Business Management				
R772	BA(Hons) Russian with Japanese	ABB including Russian or another modern foreign language	33, 6 in Higher Level Russian or another modern foreign language	Overall IELTS grade of 7.0 with a minimum of 6.5 in each component	£18,000
RW73	BA(Hons) Russian and Music	ABB including a modern foreign language and Music or Grade 8 Practical (ABRSM/Trinity/Rockschool) at Merit + Grade 5 theory (ABRSM/Trinity) at Merit	33, 6 in a Higher Level modern foreign language and in Higher Level Music or Grade 8 Practical (ABRSM/Trinity/Rockschool) at Merit + Grade 5 theory (ABRSM/Trinity) at Merit	Overall IELTS grade of 7.0 with a minimum of 6.5 in each component	£18,000
RR47	BA(Hons) Russian and Hispanic Studies	ABB including Spanish or Russian	33, 6 in Higher Level Spanish or Russian	Overall IELTS grade of 7.0 with a minimum of 6.5 in each component	£16,000
RL71	BA(Hons) Russian and Economics	AAB including a modern foreign language	34, 6 in a Higher Level modern foreign language	Overall IELTS grade of 7.0 with a minimum of 6.5 in each component	£16,000
<b>Sheffield Methods Institute</b>					
L305	BSc(Hons) Applied Social Science	ABB	33	Overall IELTS grade of 6.5 with a minimum of 6.0 in each component	£16,000
L435	BA(Hons) Quantitative Social Science	ABB	33	Overall IELTS grade of 6.5 with a minimum of 6.0 in each component	£16,000
L431	BA(Hons) Applied Social Science	ABB	33	Overall IELTS grade of 6.5 with a minimum of 6.0 in each component	£16,000
<b>Sociological Studies</b>					
L300	BA(Hons) Sociology				
LL34	BA(Hons) Sociology with Social Policy	BBB	32	Overall IELTS grade of 6.5 with a minimum of 6.0 in each component	£16,000
L390	BA(Hons) Sociology with Criminology				
L391	BA(Hons) Digital Media and Society	ABB	33	Overall IELTS grade of 6.5 with a minimum of 6.0 in each component	£16,000
<b>Urban Studies</b>					
L722	BA(Hons) Urban Studies	BBB	32	Overall IELTS grade of 6.5 with a minimum of 6.0 in each component	£16,000
K400	MPlan(Hons) Urban Studies and Planning	BBB	32	Overall IELTS grade of 6.5 with a minimum of 6.0 in each component	£16,000
LX74	BA(Hons) Geography and Planning	ABB including Geography or another social science	33, 6 in Higher Level Geography or another social science	Overall IELTS grade of 6.5 with a minimum of 6.0 in each component	£18,000

**Postgraduate taught masters**

Most of our masters courses last only one year compared with two years in other countries, including the USA and Australia. If you choose a course in the UK, you'll save on tuition fees and living costs and you'll be able to start working and earning money sooner.

[www.sheffield.ac.uk/postgraduate/taught/courses](http://www.sheffield.ac.uk/postgraduate/taught/courses)

**Please note that the following course information is only accurate at the time of publication and changes may be made subsequently.**

The fees published here are for the academic session 2017-18 and are provided as a guide only. Fees for academic entry 2018-19 will be released in September 2017 and will be published at [www.sheffield.ac.uk/international/enquiry/money/tuitionfees](http://www.sheffield.ac.uk/international/enquiry/money/tuitionfees)

**Key**  
DL – Distance Learning  
TBC – To be confirmed

Course	Qualification	English Language Requirements (IELTS) (or an equivalent English language qualification)	Tuition fee (2017-18)
<b>Animal and Plant Sciences</b>			
Ecology and Environment	MRes	Overall IELTS grade of 7.0 with a minimum of 6.0 in each component	£22,250
Evolution and Behaviour	MRes	Overall IELTS grade of 7.0 with a minimum of 6.0 in each component	£22,250
Plant and Microbial Biology	MRes	Overall IELTS grade of 7.0 with a minimum of 6.0 in each component	£22,250
<b>Archaeology</b>			
Aegean Archaeology	MA	Overall IELTS grade of 6.5 with a minimum of 5.5 in each component	£19,000
Archaeology	MA	Overall IELTS grade of 6.5 with a minimum of 5.5 in each component	£19,000
Archaeology of the Classical Mediterranean	MA	Overall IELTS grade of 6.5 with a minimum of 5.5 in each component	£20,470
Cultural Heritage Management	MA	Overall IELTS grade of 6.5 with a minimum of 6.0 in each component	£19,000
Cultural Materials	MA	Overall IELTS grade of 6.5 with a minimum of 5.5 in each component	£19,000
Environmental Archaeology and Palaeoeconomy	MSc	Overall IELTS grade of 6.5 with a minimum of 5.5 in each component	£19,500
Human Osteology and Funerary Archaeology	MSc	Overall IELTS grade of 6.5 with a minimum of 5.5 in each component	£19,000
Landscape Archaeology	MA	Overall IELTS grade of 6.5 with a minimum of 5.5 in each component	£19,000
Medieval Archaeology	MA	Overall IELTS grade of 6.5 with a minimum of 5.5 in each component	£19,000
Osteoarchaeology	MSc	Overall IELTS grade of 6.5 with a minimum of 5.5 in each component	£19,500
Palaeoanthropology	MSc	Overall IELTS grade of 6.5 with a minimum of 5.5 in each component	£19,500
<b>Architecture</b>			
Architectural Design	MA	Overall IELTS grade of 6.5 with a minimum of 6.0 in each component	£18,000
Architecture	MArch	Overall IELTS grade of 6.5 with a minimum of 6... in each component	£18,000
Architecture and Landscape Architecture	MArch	Overall IELTS grade of 6.5 with a minimum of 6.0 in each component	£18,000
Architecture and Town and Regional Planning	MArch	Overall IELTS grade of 6.5 with a minimum of 6.0 in each component	£18,000
Digital Architecture and Design	MSc	Overall IELTS grade of 6.5 with a minimum of 6.0 in each component	£18,000
Sustainable Architecture Studies	MSc	Overall IELTS grade of 6.5 with a minimum of 6.0 in each component	£18,000
Urban Design	MA	Overall IELTS grade of 6.5 with a minimum of 6.0 in each component	£18,000
<b>Automatic Control and Systems Engineering</b>			
Advanced Control and Systems Engineering	MSc	Overall IELTS grade of 6.5 with a minimum of 6.0 in each component	£20,470

Course	Qualification	English Language Requirements (IELTS) (or an equivalent English language qualification)	Tuition fee (2017-18)
Advanced Control and Systems Engineering (with Industrial Management)	MSc	Overall IELTS grade of 6.5 with a minimum of 6.0 in each component	\$20,470
Advanced Control and Systems Engineering (with Industry)	MSc	Overall IELTS grade of 7.5 with a minimum of 6.5 in each component	Year 1 £20,470 Year 2 £4,290 (Placement) \$20,470
Computational Intelligence and Robotics	MSc	Overall IELTS grade of 6.5 with a minimum of 6.0 in each component	\$20,470
<b>Biomedical Science</b>			
Genomic Approaches to Drug Discovery	MSc	Overall IELTS grade of 7.0 with a minimum of 6.0 in each component	\$22,250
Molecular and Cellular Basis of Human Disease	MSc	Overall IELTS grade of 7.0 with a minimum of 6.0 in each component	\$22,250
Sensory Neuroscience	MSc	Overall IELTS grade of 7.0 with a minimum of 6.0 in each component	\$22,250
Stem Cell and Regenerative Medicine	MSc	Overall IELTS grade of 7.0 with a minimum of 6.0 in each component	\$22,250
<b>Chemical and Biological Engineering</b>			
Biochemical Engineering with Industrial Management	MSc(Eng)	Overall IELTS grade of 6.5 with a minimum of 5.5 in each component	\$20,470
Biological and Bioprocess Engineering	MSc(Eng)	Overall IELTS grade of 6.5 with a minimum of 5.5 in each component	\$20,470
Energy Engineering with Industrial Management	MSc(Eng)	Overall IELTS grade of 6.5 with a minimum of 5.5 in each component	\$21,250
Environmental and Energy Engineering	Dip/MSc(Eng)	Overall IELTS grade of 6.5 with a minimum of 5.5 in each component	\$21,250
Process Safety and Loss Prevention	Dip/MSc(Eng)	Overall IELTS grade of 6.5 with a minimum of 5.5 in each component	\$22,250
<b>Chemistry</b>			
Chemistry	MSc	Overall IELTS grade of 6.5 with a minimum of 5.5 in each component	\$20,470
Polymers for Advanced Technologies	MSc	Overall IELTS grade of 6.5 with a minimum of 5.5 in each component	\$20,470
<b>Civil and Structural Engineering</b>			
Architectural Engineering Design	MSc(Eng)	Overall IELTS grade of 6.5 with a minimum of 6.0 in each component	\$21,250
Civil Engineering	MSc(Eng)	Overall IELTS grade of 6.5 with a minimum of 6.0 in each component	\$21,250
Earthquake and Civil Engineering Dynamics	MSc(Eng)	Overall IELTS grade of 6.5 with a minimum of 6.0 in each component	\$21,250
Steel Construction	MSc(Eng)	Overall IELTS grade of 6.5 with a minimum of 6.0 in each component	\$21,250
Structural and Concrete Engineering	MSc(Eng)	Overall IELTS grade of 6.5 with a minimum of 6.0 in each component	\$21,250
Structural Engineering	MSc(Eng)	Overall IELTS grade of 6.5 with a minimum of 6.0 in each component	\$21,250
Water Engineering	MSc(Eng)	Overall IELTS grade of 6.5 with a minimum of 6.0 in each component	\$21,250
<b>Clinical Dentistry</b>			
Endodontics	DClinDent	Overall IELTS grade of 7.0 with a minimum of 6.0 in each component	\$41,250
Orthodontics	DClinDent/DClinDent	Overall IELTS grade of 7.0 with a minimum of 6.0 in each component	\$41,250
Dental Materials Science	MSc	Overall IELTS grade of 7.0 with a minimum of 6.0 in each component	\$20,470
Dental Public Health	MDPH	Overall IELTS grade of 7.0 with a minimum of 6.0 in each component	\$21,250
Dental Technology	MSc	Overall IELTS grade of 6.5 with a minimum of 5.5 in each component	\$22,820
Diagnostic Oral Pathology	MMedSci	Overall IELTS grade of 7.0 with a minimum of 6.0 in each component	\$41,250
Paediatric Dentistry	MClinDent	Overall IELTS grade of 7.0 with a minimum of 6.0 in each component	\$41,250
Periodontics	DClinDent	Overall IELTS grade of 7.0 with a minimum of 6.0 in each component	\$41,250
Prosthodontics	DClinDent	Overall IELTS grade of 7.0 with a minimum of 6.0 in each component	\$41,250

<b>Computer Science</b>			
Advanced Computer Science	MSc	Overall IELTS grade of 6.5 with a minimum of 6.0 in each component	\$20,470
Advanced Software Engineering	MSc(Eng)	Overall IELTS grade of 6.5 with a minimum of 6.0 in each component	\$20,470
Computer Science with Speech and Language Processing	MSc	Overall IELTS grade of 6.5 with a minimum of 6.0 in each component	\$20,470
Data Analytics	MSc	Overall IELTS grade of 6.5 with a minimum of 6.0 in each component	\$20,470
Software Systems and Internet Technology	MSc	Overall IELTS grade of 6.5 with a minimum of 6.0 in each component	\$20,470
<b>East Asian Studies</b>			
Contemporary China	MA	Overall IELTS 6.5 with a minimum of 6.5 in writing and no less than 5.5 in all other components	\$17,500
Contemporary Japan	MA	Overall IELTS 6.5 with a minimum of 6.5 in writing and no less than 5.5 in all other components	\$17,500
East Asian Business	MSc	Overall IELTS 6.5 with a minimum of 6.5 in writing and no less than 5.5 in all other components	\$18,000
Politics and Media in East Asia	Cert/Dip/MA	Overall IELTS 6.5 with a minimum of 6.5 in writing and no less than 5.5 in all other components	\$17,500
Teaching Chinese as a Foreign Language	MA	Overall IELTS 6.5 with a minimum of 6.5 in writing and no less than 5.5 in all other components	\$17,500
<b>Economics</b>			
Business Finance and Economics	MSc	Overall IELTS grade of 6.5 with a minimum of 6.0 in each component	\$18,000
Economics	MSc	Overall IELTS grade of 6.5 with a minimum of 6.0 in each component	\$16,500
Economics and Health Economics	MSc	Overall IELTS grade of 6.5 with a minimum of 6.0 in each component	\$16,500
Economics and Public Policy	MSc	Overall IELTS grade of 6.5 with a minimum of 6.0 in each component	\$18,000
Finance	MSc	Overall IELTS grade of 6.5 with a minimum of 6.0 in each component	\$20,470
Financial Economics	MSc	Overall IELTS grade of 6.5 with a minimum of 6.0 in each component	\$18,000
International Finance and Economics	MSc	Overall IELTS grade of 6.5 with a minimum of 6.0 in each component	\$18,000
Money, Banking and Finance	MSc	Overall IELTS grade of 6.5 with a minimum of 6.0 in each component	\$18,000
<b>Education</b>			
Applied Professional Studies in Education	MA	Overall IELTS grade of 6.5 with a minimum of 5.5 in each component	\$5,500 (DL)
Early Childhood Education	MA	Overall IELTS grade of 6.5 with a minimum of 6.0 in each component	\$6,000 (DL)
Education	MA	Overall IELTS grade of 6.5 with a minimum of 6.0 in each component	\$16,000
Education	PGDE	Overall IELTS grade of 6.5 with a minimum of 5.5 in each component	\$16,000
Education: Language and Education	MA	Overall IELTS grade of 6.5 with a minimum of 6.0 in each component	\$16,000
Globalising Education: Policy and Practice	MA	Overall IELTS grade of 6.5 with a minimum of 6.0 in each component	\$16,000
Psychology and Education	MA	Overall IELTS grade of 6.5 with a minimum of 6.0 in each component	\$16,000
<b>Electronic and Electrical Engineering</b>			
Advanced Electrical Machines, Power Electronics and Drives	MSc	Overall IELTS grade of 6.5 with a minimum of 6.0 in each component	\$20,470
Data Communications	MSc(Eng)	Overall IELTS grade of 6.5 with a minimum of 6.0 in each component	\$20,470
Electronic and Electrical Engineering	MSc(Eng)	Overall IELTS grade of 6.5 with a minimum of 6.0 in each component	\$20,470
Semiconductor Photonics and Electronics	MSc(Eng)	Overall IELTS grade of 6.5 with a minimum of 6.0 in each component	\$21,250
Wireless Communication Systems	MSc(Eng)	Overall IELTS grade of 6.5 with a minimum of 6.0 in each component	\$20,470
<b>English</b>			
Applied Linguistics with TESOL	Dip/MA	Overall IELTS grade of 7.0 with a minimum of 6.5 in writing, 6.0 in the other components	\$16,000
Creative Writing	MA	Overall IELTS grade of 7.5 with a minimum of 6.5 in each component	\$16,000
Eighteenth-Century Studies	MA	Overall IELTS grade of 7.5 with a minimum of 6.5 in each component	\$16,000



Course	Qualification	English Language Requirements (IELTS) (or an equivalent English language qualification)	Tuition fee (2017-18)
English Language and Linguistics	MA	Overall IELTS grade of 7.0 with a minimum of 6.5 in writing; 6.0 in the other components	\$16,000
English Literature	MA	Overall IELTS grade of 7.5 with a minimum of 6.5 in each component	\$16,000
English Studies (2 years online)	MA	Overall IELTS grade of 7.5 with a minimum of 6.5 in each component	\$8,000
Nineteenth-Century Studies	MA	Overall IELTS grade of 7.5 with a minimum of 6.5 in each component	\$16,000
Theatre and Performance Studies	MA	Overall IELTS grade of 7.5 with a minimum of 6.5 in each component	\$16,000
<b>French</b>			
French Studies (Research Track)	MA	Overall IELTS grade of 7.0 with a minimum of 6.5 in each component	\$16,000
<b>Geography</b>			
Environmental Change and International Development	MSc	Overall IELTS grade of 6.5 with a minimum of 6.0 in each component	\$20,470
Food Security and Food Justice	MA	Overall IELTS grade of 6.5 with a minimum of 6.0 in each component	\$20,470
International Development	MA	Overall IELTS grade of 6.5 with a minimum of 6.0 in each component	\$20,470
International Development	MPH	Overall IELTS grade of 6.5 with a minimum of 6.0 in each component	\$20,470
Polar and Alpine Change	MSc (Res)	Overall IELTS grade of 7.0 with a minimum of 6.5 in each component	\$18,000
<b>Germanic Studies</b>			
Germanic Studies (Programme Track)	MA	Overall IELTS grade of 7.0 with a minimum of 6.5 in each component	\$16,000
Germanic Studies (Research Track)	MA	Overall IELTS grade of 7.0 with a minimum of 6.5 in each component	\$16,000
<b>Health and Related Research (SchARR)</b>			
Advanced Emergency Care	MSc	Overall IELTS grade of 6.5 with a minimum of 6.0 in each component	\$10,500 (DL)
Clinical Research	Dip/MSc	Overall IELTS grade of 6.5 with a minimum of 6.0 in each component	\$19,500
European Public Health	MPH	Overall IELTS grade of 6.5 with a minimum of 6.0 in each component	TBC
Health Economics and Decision Modelling	MSc	Overall IELTS grade of 6.5 with a minimum of 6.0 in each component	\$19,500
International Health Management and Leadership	MSc	Overall IELTS grade of 6.5 with a minimum of 6.0 in each component	\$10,500 (DL)
International Health Technology Assessment, Pricing and Reimbursement	MSc	Overall IELTS grade of 6.5 with a minimum of 6.0 in each component	\$10,500 (DL)
Public Health (Health Services Research)	MPH	Overall IELTS grade of 6.5 with a minimum of 6.0 in each component	\$19,500
Public Health (Management and Leadership)	MPH	Overall IELTS grade of 6.5 with a minimum of 6.0 in each component	\$19,500
Public Health	MPH	Overall IELTS grade of 6.5 with a minimum of 6.0 in each component	\$19,500 (\$10,500 DL)
<b>Hispanic Studies</b>			
Catalan Studies	MA	Overall IELTS grade of 7.0 with a minimum of 6.5 in each component	\$16,000
Hispanic Studies	MA	Overall IELTS grade of 7.0 with a minimum of 6.5 in each component	\$16,000
Latin American Studies	MA	Overall IELTS grade of 7.0 with a minimum of 6.5 in each component	\$16,000
<b>History</b>			
American History	MA	Overall IELTS grade of 7.0 with a minimum of 6.5 in each component	\$16,000
Early Modern History	MA	Overall IELTS grade of 7.0 with a minimum of 6.5 in each component	\$16,000
Historical Research	MA	Overall IELTS grade of 7.0 with a minimum of 6.5 in each component	\$16,000
Medieval History	MA	Overall IELTS grade of 7.0 with a minimum of 6.5 in each component	\$16,000
Modern History	MA	Overall IELTS grade of 7.0 with a minimum of 6.5 in each component	\$16,000

<b>Human Communication Sciences</b>			
Acquired Communication Disorders	Cent/Dip/MSc	Overall IELTS grade of 7.0 with a minimum of 6.0 in each component	\$20,470 (\$10,235 2 yrs DL) \$6,820 3 yrs DL)
Language and Communication Impairment in Children	Cent/Dip/MSc	Overall IELTS grade of 7.0 with a minimum of 6.0 in each component	\$6,820 (DL) \$10,235 (FastTrack)
Speech Difficulties	Cent/Dip/MSc	Overall IELTS grade of 7.0 with a minimum of 6.0 in each component	\$20,470 (\$10,235 DL)
<b>Information, Data and Knowledge Management</b>			
Data Science	MSc	Overall IELTS grade of 6.5, with a minimum of 6.0 in each component	\$19,000
Digital Library Management	MSc	Overall IELTS grade of 6.5, with a minimum of 6.0 in each component	\$18,500
Health Informatics	MSc	Overall IELTS grade of 6.5 with a minimum of 6.0 in each component	\$3,917 (DL)
Information Management	MSc	Overall IELTS grade of 6.5, with a minimum of 6.0 in each component	\$18,500
Librarianship	MA	Overall IELTS grade of 6.5, with a minimum of 6.0 in each component	\$18,500
Library and Information Services Management	MA	Overall IELTS grade of 6.5, with a minimum of 6.0 in each component	\$6,150 (2 yrs DL) \$4,100 (3 yrs DL)
Information Systems	MSc	Overall IELTS grade of 6.5, with a minimum of 6.0 in each component	\$18,500
<b>Journalism</b>			
Broadcast Journalism	Dip/MA	Overall IELTS grade of 7.5 with a minimum of 7.5 in each component	\$19,000
Global Journalism	MA	Overall IELTS grade of 7.0 with a minimum of 6.5 in writing and 6.0 in all other components	\$17,500
International Political Communication	MA	Overall IELTS grade of 7.0 with a minimum of 7.0 in writing and 6.0 in all other components	\$17,500
Magazine Journalism	Dip/MA	Overall IELTS grade of 7.5 with a minimum of 7.5 in each component	\$19,000
Journalism	Dip/MA	Overall IELTS grade of 7.5 with a minimum of 7.5 in each component	\$19,000
<b>Landscape</b>			
Landscape Architecture	Dip/MA	Overall IELTS grade of 6.5 with a minimum of 5.5 in each component	\$19,000
Landscape Management	Dip/MA	Overall IELTS grade of 6.5 with a minimum of 5.5 in each component	\$19,000
Landscape Studies	Dip/MA	Overall IELTS grade of 6.5 with a minimum of 5.5 in each component	\$19,000
<b>Languages and Cultures</b>			
Intercultural Communication	MA	Overall IELTS grade of 7.0 with a minimum of 6.5 in each component	\$16,000
Intercultural Communication and International Development	MA	Overall IELTS grade of 7.0 with a minimum of 6.5 in each component	\$20,470
Screen Translation	MA	Overall IELTS grade of 7.0 with a minimum of 6.5 in each component	\$16,500
Translation Studies	MA	Overall IELTS grade of 7.0 with a minimum of 6.5 in each component	\$16,500
Multilingual Information Management	MA	Overall IELTS grade of 7.0 with a minimum of 6.5 in each component	\$16,500
<b>Law</b>			
Law (Doshisha)	MA	Overall IELTS grade of 6.5 with a minimum of 6.0 in each component	TBC
International Criminology	MA	Overall IELTS grade of 6.5 with a minimum of 6.0 in each component	\$16,000

Course	Qualification	English Language Requirements (IELTS) (or an equivalent English language qualification)	Tuition fee (2017-18)
Law (3 pathways: Corporate and Commercial Law, European Law, International Law and Global Justice)	LLM	Overall IELTS grade of 6.5 with a minimum of 6.0 in each component	£16,000
Law	Dip	Overall IELTS grade of 7.5 with a minimum of 7.0 in each component	£16,000
Law (2 years)	MA	Overall IELTS grade of 7.0 with a minimum of 6.0 in each component	£16,000
Legal Practice	MA	Overall IELTS grade of 7.0 with a minimum of 6.0 in each component	£16,000
<b>Materials Science and Engineering</b>			
Advanced Materials Manufacturing	MSc(Eng)	Overall IELTS grade of 7.0 with a minimum of 6.0 in each component	£21,250
Advanced Metallurgy	MEng	Overall IELTS grade of 6.5 with a minimum of 6.0 in each component	£20,470
Aerospace Materials	MSc(Eng)	Overall IELTS grade of 6.5 with a minimum of 6.0 in each component	£20,470
Biomaterials and Regenerative Medicine	MSc	Overall IELTS grade of 6.5 with a minimum of 6.0 in each component	£20,470
Materials Science and Engineering	MSc	Overall IELTS grade of 6.5 with a minimum of 6.0 in each component	£20,470
Nanomaterials and Materials Science	MSc	Overall IELTS grade of 6.5 with a minimum of 6.0 in each component	£20,470
Nuclear Science and Technology	MSc	Overall IELTS grade of 7.0 with a minimum of 6.0 in each component	TBC
Polymers and Polymer Composite Science and Engineering	MSc(Eng)	Overall IELTS grade of 6.5 with a minimum of 6.0 in each component	£20,470
<b>Mathematics and Statistics</b>			
Mathematics	MSc	Overall IELTS grade of 6.5 with a minimum of 6.0 in each component	£18,000
Statistics	Cert	Overall IELTS grade of 6.5 with a minimum of 6.0 in each component	£18,000
Statistics	MSc	Overall IELTS grade of 6.5 with a minimum of 6.0 in each component	£18,000
Statistics with Financial Mathematics	MSc	Overall IELTS grade of 6.5 with a minimum of 6.0 in each component	£18,000 (£9,000 2 yrs DL) (£6,000 3 yrs DL)
Statistics with Medical Applications	MSc	Overall IELTS grade of 6.5 with a minimum of 6.0 in each component	£18,000
<b>Management</b>			
Accounting, Governance and Financial Management	MSc	Overall IELTS grade of 6.5 with a minimum of 6.0 in each component	£22,250
Business Administration	Cert/Dip/MBA	Overall IELTS grade of 6.5 with a minimum of 6.0 in each component	£21,250
Creative and Cultural Industries Management	MSc	Overall IELTS grade of 6.5 with a minimum of 6.0 in each component	£20,470
Entrepreneurship and Management	MSc	Overall IELTS grade of 6.5 with a minimum of 6.0 in each component	£20,470
Finance and Accounting	MSc	Overall IELTS grade of 6.5 with a minimum of 6.0 in each component	£22,250
Global Marketing Management	MSc	Overall IELTS grade of 6.5 with a minimum of 6.0 in each component	£21,250
Human Resource Management	MSc	Overall IELTS grade of 6.5 with a minimum of 6.0 in each component	£20,470
Information Systems Management	MSc	Overall IELTS grade of 6.5 with a minimum of 6.0 in each component	£20,470
International Management	MSc	Overall IELTS grade of 6.5 with a minimum of 6.0 in each component	£21,250
International Management and Marketing	MSc	Overall IELTS grade of 6.5 with a minimum of 6.0 in each component	£20,470
Logistics and Supply Chain Management	MSc	Overall IELTS grade of 6.5 with a minimum of 6.0 in each component	£20,470
Management (International Business)	MSc	Overall IELTS grade of 6.5 with a minimum of 6.0 in each component	£20,470
Marketing Management Practice	MSc	Overall IELTS grade of 6.5 with a minimum of 6.0 in each component	£21,250
Occupational Psychology	MSc	Overall IELTS grade of 6.5 with a minimum of 6.0 in each component	£20,470
Work Psychology	MSc	Overall IELTS grade of 6.5 with a minimum of 6.0 in each component	£20,470

<b>Mechanical Engineering</b>			
Advanced Manufacturing Technologies	MSc(Res)	Overall IELTS grade of 6.5 with a minimum of 6.0 in each component	£20,470
Advanced Mechanical Engineering	MSc	Overall IELTS grade of 6.5 with a minimum of 6.0 in each component	£20,470
Advanced Mechanical Engineering	MSc(Res)	Overall IELTS grade of 6.5 with a minimum of 6.0 in each component	£20,470
Aerodynamics and Aerostructures	MSc(Res)	Overall IELTS grade of 6.5 with a minimum of 6.0 in each component	£20,470
Mechanical Engineering and Industrial Management	MSc	Overall IELTS grade of 6.5 with a minimum of 6.0 in each component	£20,470
<b>The Medical School</b>			
Molecular Medicine	MSc	Overall IELTS grade of 6.5 with a minimum of 6.5 in listening and 6.0 in all other components. Students applying for the Clinical Applications pathway will need an IELTS score of 7 to include a score of 7 in the Listening component.	£19,500
Clinical Neurology	MSc	Overall IELTS grade of 7.0 with a minimum of 6.0 in reading, 6.0 in writing, 7.0 in listening and 6.0 in speaking	£22,250
Genomic Medicine	MSc	Overall IELTS grade of 7.0 with a minimum of 7.0 in listening and 6.0 in the other components	£22,250
Translational Neuroscience	MSc	Overall IELTS grade of 7.0 with a minimum of 7.0 in listening and 6.0 in the other components	£22,250
Translational Neuropathology (Neuroscience)	MSc	Overall IELTS grade of 7.0 with a minimum of 7.0 in listening and 6.0 in the other components	£22,250
Human Nutrition	Dip/MMedSci	Overall IELTS grade of 6.5 with a minimum of 6.0 in each component	£20,470
Musculoskeletal Ageing	MRes	Overall IELTS grade of 6.5 with a minimum of 6.5 in each component	£21,250
Reproductive and Developmental Medicine	MSc	Overall IELTS 6.5 with a minimum of 6.5 in listening and 6.0 in other components	£22,250
Translational Oncology	MSc(Res)	Overall IELTS grade of 7.0 with a minimum of 7.0 in listening and 6.0 in the other components	£20,470
Vision and Strabismus	Cert/Dip/MMedSci	Overall IELTS grade of 7.0 with a minimum of 6.5 in each component	£10,800 over 3 years: Year 1 £3,850 Year 2 £3,600 Year 3 £3,350
<b>Molecular Biology and Biotechnology</b>			
Human and Molecular Genetics	MSc	Overall IELTS grade of 7.0 with a minimum of 6.0 in each component	£20,470
Molecular Biology and Biotechnology	MSc	Overall IELTS grade of 7.0 with a minimum of 6.0 in each component	£20,470
<b>Music</b>			
Composition	MA	Overall IELTS grade of 6.5 with a minimum of 5.5 in each component	£18,000
Ethnomusicology	MA	Overall IELTS grade of 6.5 with a minimum of 5.5 in each component	£18,000
Music Management	MA	Overall IELTS grade of 6.5 with a minimum of 6.0 in each component	£20,470
Music Performance Studies	MA	Overall IELTS grade of 6.5 with a minimum of 5.5 in each component	£18,000
Music Psychology in Education	PGCert/PGDip/MA	Overall IELTS grade of 6.5 with a minimum of 5.5 in each component	£9,000 (DL)
Musicology	MA	Overall IELTS grade of 6.5 with a minimum of 5.5 in each component	£18,000
Psychology for Musicians	PGCert/PGDip/MA	Overall IELTS grade of 6.5 with a minimum of 5.5 in each component	£9,000 (DL)
Psychology of Music	MA	Overall IELTS grade of 6.5 with a minimum of 5.5 in each component	£18,000
Sonic Arts	MA	Overall IELTS grade of 6.5 with a minimum of 5.5 in each component	£18,000
Traditional Music of the British Isles	MA	Overall IELTS grade of 6.5 with a minimum of 5.5 in each component	£9,000 (DL)
World Music Studies	MA	Overall IELTS grade of 6.5 with a minimum of 5.5 in each component	£9,000 (DL)
<b>Nursing and Midwifery</b>			
Advanced Nursing Studies	MMedSci	Overall IELTS grade of 6.5 with a minimum of 6.0 in each component	£3,670 (DL)



Course	Qualification	English Language Requirements (IELTS) (or an equivalent English language qualification)	Tuition fee (2017-18)
Advancing Practice	Cert/Dip/MedSci	Overall IELTS grade of 6.5 with a minimum of 6.0 in each component	£16,000
Dementia Studies	MA	Overall IELTS grade of 6.5 with a minimum of 6.0 in each component	£19,000
<b>Philosophy</b>			
Cognitive Studies	MA	Overall IELTS grade of 7.0 with a minimum of 6.0 in each component	£16,000
Philosophy	MA	Overall IELTS grade of 7.0 with a minimum of 6.0 in each component	£16,000
Political Theory	MA	Overall IELTS grade of 7.0 with a minimum of 6.0 in each component	£16,000
<b>Politics</b>			
European and Global Affairs	MA	Overall IELTS grade of 6.5 with a minimum of 6.5 in writing and a minimum of 5.5 in all other components	TBC
Global Political Economy	MA	Overall IELTS grade of 6.5 with a minimum of 6.0 in each component	£16,500
International Relations	MA	Overall IELTS grade of 6.5 with a minimum of 6.0 in each component	£16,500
Politics, Governance and Public Policy	MA	Overall IELTS grade of 6.5 with a minimum of 6.0 in each component	£16,500
Politics with Research Methods	MA	Overall IELTS 6.5 with 6.5 in writing and 5.5 in all other components	£16,500
<b>Psychology</b>			
Cognitive and Computational Neuroscience	MSc	Overall IELTS 7.0 with 7.0 in writing and 6.0 in the other components	£20,470
Cognitive Neuroscience and Human Neuroimaging	MSc (Res)	Overall IELTS 7.0 with 7.0 in writing and 6.0 in the other components	£22,250
Psychological Research Methods	MSc	Overall IELTS 7.0 with 7.0 in writing and 6.0 in the other components	£20,470
Psychological Research Methods and Advanced Statistics	MSc	Overall IELTS 7.0 with 7.0 in writing and 6.0 in the other components	£20,470
<b>Public Humanities</b>			
Public Humanities	MA	Overall IELTS grade of 7.0 with a minimum of 6.0 in each component	£16,000
<b>Science Communication</b>			
Science Communication	MSc	Overall IELTS grade of 7.0 with a minimum of 6.5 in each component	£17,500
<b>Sheffield Institute for Interdisciplinary Biblical Studies (SIIBS)</b>			
Biblical Studies Research	MA	Overall IELTS grade of 7.0 with a minimum of 6.0 in each component	£16,000
Leadership, Religion and Society	MA	Overall IELTS grade of 7.0 with a minimum of 6.5 in each component	£16,000
<b>Sheffield Methods Institute</b>			
Social Research	MA	Overall IELTS grade of 7.0 with a minimum of 6.0 in each component	£16,000
<b>Sociological Studies</b>			
Digital Media and Society	MA	Overall IELTS grade of 6.5 with a minimum of 6.0 in each component	£16,000
International Social Change and Policy	MSc	Overall IELTS grade of 6.5 with a minimum of 6.0 in each component	£16,000
Social Work	MA	Overall IELTS grade of 7.0 with a minimum of 6.5 in each component	£16,000
<b>Urban Studies and Planning</b>			
Applied GIS	MSc	Overall IELTS grade of 6.5 with a minimum of 5.5 in each component	£16,500
Cities and Global Development	MA	Overall IELTS grade of 6.5 with a minimum of 6.0 in each component	£16,000
Commercial Real Estate	MA	Overall IELTS grade of 7.0 with a minimum of 6.0 in each component	£16,000
Real Estate Planning and Development	MA	Overall IELTS grade of 7.0 with a minimum of 6.0 in each component	£16,000
Town and Regional Planning	MA	Overall IELTS grade of 7.0 with a minimum of 6.0 in each component	£16,000
Urban Design and Planning	MA	Overall IELTS grade of 7.0 with a minimum of 6.0 in each component	£16,000

## Postgraduate PhD research

We offer a wide range of research programmes in a variety of subject areas including arts, health, humanities, science and social science. A number of departments offer a PhD with an integrated masters.

[www.sheffield.ac.uk/postgraduate/research/areas](http://www.sheffield.ac.uk/postgraduate/research/areas)

[The Doctoral Academy  
www.sheffield.ac.uk/postgraduate/research/sheffield](http://www.sheffield.ac.uk/postgraduate/research/sheffield)

[Find a PhD supervisor  
www.sheffield.ac.uk/postgraduate/research/sheffield/supervisors](http://www.sheffield.ac.uk/postgraduate/research/sheffield/supervisors)



## Find a supervisor

We make it easy to find the right match for you, just search by key word to read about supervisors who might be working in your area

[www.sheffield.ac.uk/postgraduate/research/areas](http://www.sheffield.ac.uk/postgraduate/research/areas)

All information correct at time of print.

Animal and Plant Sciences	Oncology and Metabolism
Archaeology	Philosophy
Architecture	Physics and Astronomy
Automatic Control and Systems Engineering	Politics
Biblical Studies	Psychology
Biomedical Science	Russian and Slavonic Studies
Chemical and Biological Engineering	Sociological Studies
Chemistry	Urban Studies and Planning
Civil and Structural Engineering	
Computer Science	
Dentistry	
East Asian Studies	
Economics	
Education	
Electronic and Electrical Engineering	
English	
French	
Geography	
Germanic Studies	
Health and Related Research	
Hispanic Studies	
History	
Human Communication Sciences	
Infection, Immunity and Cardiovascular Disease	
Information School	
Journalism Studies	
Landscape	
Languages and Cultures	
Law	
Management	
Materials Science and Engineering	
Mathematics and Statistics	
Mechanical Engineering	
Medical Education	
Molecular Biology and Biotechnology	
Music	
Neuroscience	
Nursing and Midwifery	







# How to apply

After you have decided which course is best for you, applying for any course at the University of Sheffield is straightforward.

We advise you to start researching your choices one year before you want to come to Sheffield. The application process can take up to two months. It can take longer if the University makes a conditional offer and we have to wait for your examination results.

## Foundation and pre-masters courses

Applications for courses at the University of Sheffield International College are made directly to the college. You can apply online at: [www.sheffield.ac.uk/international-college](http://www.sheffield.ac.uk/international-college)

## Undergraduate degrees

All applications for undergraduate courses must be made through the UK's centralised University and Colleges Admissions Service (UCAS). You can make up to five choices (courses or universities) in your UCAS application. The deadline for applications is 30 June 2018 to begin your study in September 2018. We recommend that you apply as early as possible because some courses are very popular and fill up quickly. There is an earlier deadline of 15 October 2017 for all applications for Medicine and Dentistry. Applications are made online via the UCAS website: [www.ucas.com](http://www.ucas.com)

## Postgraduate taught (masters) courses

Apply directly to the University. You can apply online at: [www.sheffield.ac.uk/postgraduate/taught/apply](http://www.sheffield.ac.uk/postgraduate/taught/apply)

As well as your application, we require the following:

- Official certificates / transcripts of any qualifications already received (eg undergraduate degree).
- A supporting statement explaining why you want to take the course and what qualifications or experience you have.
- Two references, one of which must be from an academic contact.
- Evidence of your English language ability (if required).

Competition for places on our masters courses is strong. We advise students to apply as early as possible. You do not have to wait for examination results, or even references, before applying.

## Research programmes (MPhil, PhD)

There are three ways to apply for doctoral research:

- Develop your own idea and find a supervisor
- Apply to work with a supervisor on one of their projects
- Apply to a Centre for Doctoral Training (CDT)

You can find out more at: [www.sheffield.ac.uk/postgraduate/research/sheffield/phd-routes](http://www.sheffield.ac.uk/postgraduate/research/sheffield/phd-routes)

When you're ready to apply, you can do so online at: [www.sheffield.ac.uk/postgraduate/research/apply](http://www.sheffield.ac.uk/postgraduate/research/apply)

## Our Study Abroad Programme

This programme is open to undergraduate students from non-European countries. You can spend a semester or an academic year studying at Sheffield as part of your home degree studies. All academic credits can be transferred to your home institution. You can find details on how to apply on our website: [www.sheffield.ac.uk/studyabroad](http://www.sheffield.ac.uk/studyabroad)

## Receiving an offer

Offers can be conditional or unconditional. A conditional offer means that we will offer you a place if you meet certain conditions, which are usually based on your examination results.



Your offer will include the conditions you need to meet. If you receive a conditional offer, it usually means we are waiting for some information from you.

This could include:

- Final examination results from school or university.
- Evidence of your English language ability such as an IELTS result.
- Other documentation in support of your application; for example, your reference letters.

Conditional offers are common. You do not need to wait for your final examination results before you make your application to Sheffield. In fact, we encourage applications from students who are academically strong but do not yet have their final examination results.

We can offer you a place on condition that you achieve a

certain percentage in your final examinations or subject to satisfactory references. This way, a place is reserved for you until you get your results.

An unconditional offer means that you have met the entry requirements and we are happy to accept you.

## English language requirements

All applicants, both undergraduate and postgraduate, need to demonstrate they have a good level of written and spoken English. Our minimum English language entry requirements are:

- IELTS 6 or equivalent for undergraduate applicants
- IELTS 6.5 or equivalent for postgraduate applicants

Some departments require higher scores.

For details of the English language qualifications we accept, see: [www.sheffield.ac.uk/undergraduate/policies/englang](http://www.sheffield.ac.uk/undergraduate/policies/englang) [www.sheffield.ac.uk/postgraduate/info/englang](http://www.sheffield.ac.uk/postgraduate/info/englang)

## What if I need to improve my English?

We can help. For details of English preparation courses run by our English Language Teaching Centre, see page 36.

You can still apply for your course. Most academic departments will make conditional offers to applicants who are expected to meet the English language requirements before they begin their studies.

A conditional offer depends upon you achieving the required level of English before starting the course.

## Fees and finance

Studying for your degree at the University of Sheffield offers you a world-class high-quality qualification and excellent value for money. Remember the investment you are making to secure your future. One of the great advantages of studying at the University of Sheffield is that your money will go further in our city. Sheffield is one of the cheapest places in the UK to live and study.

### Tuition fees for international students

We offer a special fixed-fee guarantee for international students taking courses longer than one year.

International students will pay the same fixed annual tuition fee for each year of their course. The tuition fee you pay in your first year will be the same for each year of your course. The only exception is if you are joining Medicine and Dentistry, where a clinical fixed fee will apply to the final years of your course.

This means that you will know exactly how much you will pay each year before you start your studies. This will make it easier to plan and budget for your time in Sheffield.

Overseas fees for academic entry 2018-19 will be set in September 2017 and details should be available on the University's website from September 2017.

For more information on tuition fees, visit:

[www.sheffield.ac.uk/international/enquiry/money/tuitionfees](http://www.sheffield.ac.uk/international/enquiry/money/tuitionfees)

### Advance tuition fee payments

The University of Sheffield is a popular choice for study and we receive many more applications than there are places available. International students on a postgraduate taught course are required to pay a fee deposit (or advance tuition fee payment). We will send you information with your offer if we need you to pay a deposit, including the deadline for payment and how to pay it.

### Estimated budget:

Nine months in Sheffield – an undergraduate course (September–June)	£9,135
Twelve months in Sheffield – a postgraduate course (September–August)	£12,180

The above will cover accommodation, food, books, equipment, insurance and local transport costs. Students with dependants will need to budget for additional expenses. You should budget for £680 per month for each dependant (spouse or child).

The amount is deducted from your overall course fee when you register with us. The fee deposit must be paid when you accept your offer.

You can find more information about fee deposits at: [www.sheffield.ac.uk/feedeports](http://www.sheffield.ac.uk/feedeports)

### Living costs

Sheffield is one of the cheapest places in the UK to live and study. Research shows that living costs in Sheffield are 90% of the UK national average. (source: Creative Sheffield).

The monthly living costs recommended by the UK government are £1015 per calendar month outside of London.

Although much depends on your personal standard of living, the table below will give you an idea of the budget needed for your study in Sheffield.

## International scholarships

**We believe in rewarding international applicants who show exceptional academic achievement and potential.**

Partial scholarships are available for undergraduate and postgraduate taught students from many countries. Awards vary depending on your country and level of study at the University of Sheffield. There are also scholarship schemes for University of Sheffield alumni as well as siblings and spouses of our students.

For further information on all the scholarship schemes, see: [www.sheffield.ac.uk/international/enquiry/money/scholarships](http://www.sheffield.ac.uk/international/enquiry/money/scholarships)

If we offer you a place and you are eligible, we will automatically contact you about how to apply online for scholarships. Competition is strong and scholarships are awarded on academic merit. An independent panel of academic staff will assess your application. We will let you know their decision before you begin your studies.

We offer scholarships for postgraduate research students. For a full list of the awards available visit the below link, as this can be limited. [www.sheffield.ac.uk/international/enquiry/money/scholarships](http://www.sheffield.ac.uk/international/enquiry/money/scholarships)

**Over £4.5 million in international scholarships**





# Here to help

## Meet the team

Our team is here to help you. We are always happy to give advice and help to anyone interested in studying here. We can also put you in contact with a current Sheffield student from your country. You can put your questions to them and get their views on student life in Sheffield. You can also contact us online – on our country-specific webpages, during regular online chat sessions, and through social media.

[www.sheffield.ac.uk/international/countries/visits](http://www.sheffield.ac.uk/international/countries/visits)

We realise that it helps to make your decision easier if you can talk to someone face to face. This is why we travel overseas throughout the year to meet with you.

In the last 12 months, we have visited the following countries: India; Sri Lanka; Pakistan; China; Hong Kong; Taiwan; Malaysia; Indonesia; Thailand; Brunei; Singapore; Vietnam; South Korea; Japan; Saudi Arabia; UAE; Oman; Bahrain; Kuwait; Qatar; Jordan; Egypt; Canada; USA; Mexico; Chile; Colombia; Peru; Ecuador; Brazil; Nigeria; Ghana; Kenya; Turkey; Azerbaijan.

[www.sheffield.ac.uk/international/countries](http://www.sheffield.ac.uk/international/countries)



## Local support when you need it

When we can't be there in person, our representatives in your country can offer advice and support. Our representatives are trained counsellors who know all about our courses, entry requirements and application procedures. Many of them offer a visa counselling service to help you with UK entry clearance preparation.

We work closely with our overseas representatives. We want to make sure that you are supported from the start of your application to beginning your studies.

You can find contact details for all our representatives on our website: [www.sheffield.ac.uk/international](http://www.sheffield.ac.uk/international)  
✉ [international@sheffield.ac.uk](mailto:international@sheffield.ac.uk)

# International Student Ambassadors

We work with an amazing group of current students at Sheffield, from all over the world. These students are happy to share their experiences of studying in Sheffield and all the things that they love about being a student here.

We regularly hear from students who are considering studying in the UK and how they value speaking to someone who has been through similar experiences and may also be from the same country. That is why we have a fantastic team of ambassadors who are here to help.

Find out about our ambassadors here: [www.sheffield.ac.uk/international/enquiry/studentprofiles/ambassadors](http://www.sheffield.ac.uk/international/enquiry/studentprofiles/ambassadors)



## Our ambassadors:

- **Contact and connect with prospective students**
- **Offer a personal touch**
- **Speak in your own language**
- **Share their experiences as a student from your home country of live in Sheffield**

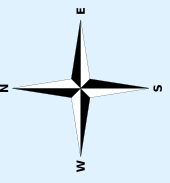
"Knowing that I have been able to help students who have felt uncertain about coming into a new city and the changes that come with that. I love knowing that sharing my experience of university life, clubs and societies and working on campus has helped students feel confident about coming to the University of Sheffield."

**International Student Ambassador 2015**



**KEY**

- Recommended main routes
- Supertram stop
- University parking (permit only)



**KEY**

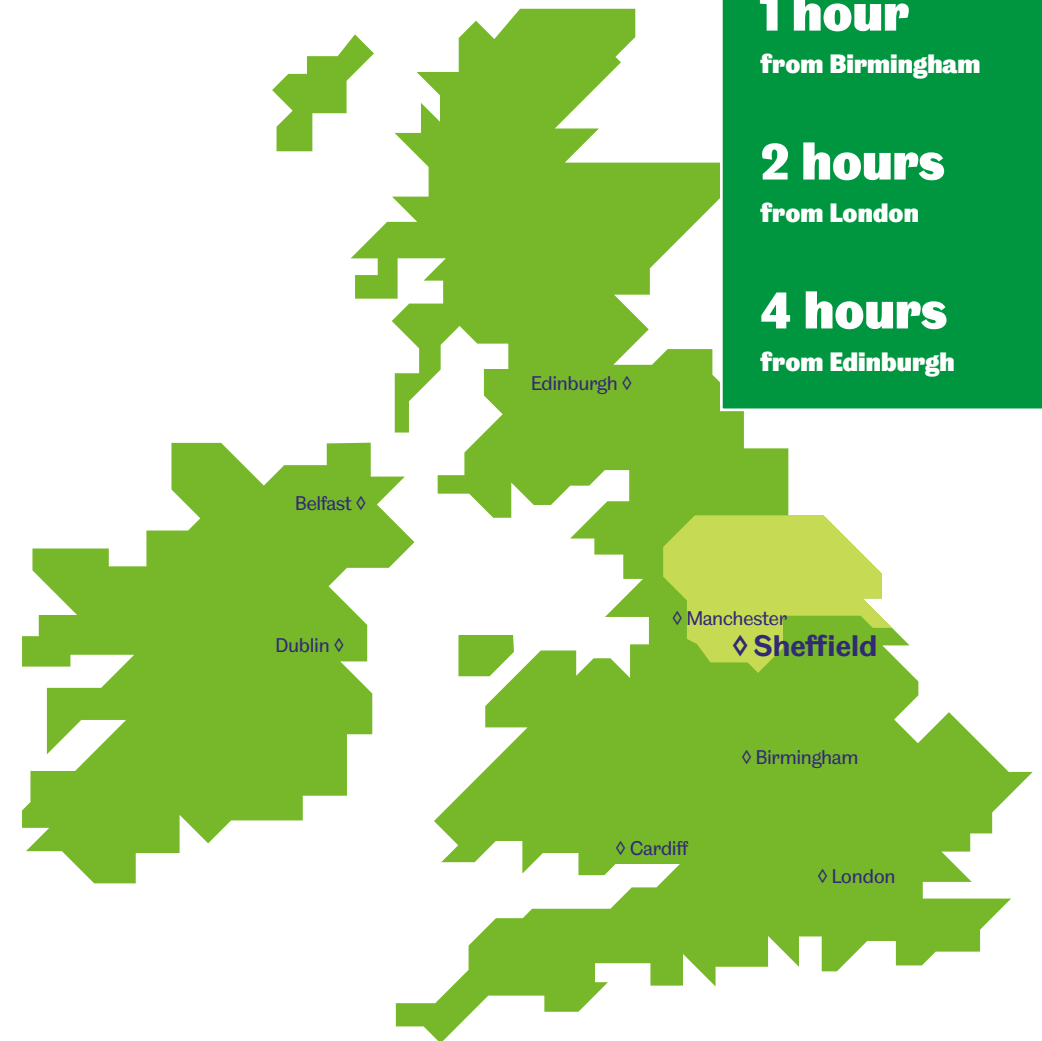
- Public car park
- Food venue
- Cafe
- Toilet
- Bus stop
- Supertram stop
- Footpath



## Ready to apply to Sheffield?



## Getting here



By train

**1 hour**  
from Manchester

**1 hour**  
from Birmingham

**2 hours**  
from London

**4 hours**  
from Edinburgh

While every effort has been made to ensure the accuracy of the information in this publication, for the reasons detailed above, changes may need to be made to modules, courses, entry requirements and fees between

the date of this publication and the start of your course. This publication is correct as at the time of print, but please see [www.sheffield.ac.uk](http://www.sheffield.ac.uk) for the most up-to-date information about undergraduate study at

the University. If there is any inconsistency between this publication and [www.sheffield.ac.uk](http://www.sheffield.ac.uk), the information on [www.sheffield.ac.uk](http://www.sheffield.ac.uk) should be taken as correct.



The  
University  
Of  
Sheffield.



[www.sheffield.ac.uk/international](http://www.sheffield.ac.uk/international)